



DIADORA



SOCCER
FALL 2016

TABLE OF CONTENTS

SOCCER FOOTWEAR

Footwear and Apparel Icons.....	3-4
Net Breathing System.....	5
Footwear Technology.....	6-8
Footwear Chart.....	9
Footwear.....	11-22

EQUIPMENT/ACCESSORIES

Soccer Balls.....	24-26
Shin Pads.....	27-28
Soccer Bags.....	29-30
GK Gloves.....	42

TEAM APPAREL

Apparel.....	31-47
Team Uniform Packages.....	37
Sublimation.....	38

TERMS AND CONDITIONS.....49

TESTIMONIALS.....50



DIADORA HISTORY

The Diadora story is one that is rich in Italian history. During World War II, the foothills of the Veneto region served as a strategic front between Italy and Austria. In the midst of the war, the Italian army was in need of military shoes and boots. Production of these essential items began in order to serve the Italians with the best footwear possible. During the post war period, the experience gained was used to create craftsman-like mountain boots. The Veneto region was now established as a landmark, known throughout Italy for the manufacture of this type of product. Shortly after World War II, with the creativity of Marcello Danieli, Diadora was born. It was 1948.

A friend suggested the name, Diadora, to Danieli. The term Diadora is derived from the Greeks. It was originally used to describe the inhabitants of the Dalmation City, the Zaratines. This however, is not the definition that sparked the name of a brilliant sporting goods company. Diadora also means, "to share gifts and honor". This is reflected in the principles of the current brand name. The sharing of successes, the concept of team in a competitive situation, and the respect for both teammates and opponents, became staples of the Diadora trademark.

Danieli founded Diadora with the help of his wife. Their first successfully launched product was a pair of mountain climbing boots. The company became known for its excellence and quality, and quickly grew to become a familiar name throughout all of Italy. During this era, Diadora was a true workshop where the best mountain boots in the market were virtually handmade.

In the sixties, skiing became very popular. Danieli, determined to meet the needs of the new sport began producing ski boots. In the process, he invented the concept of apres-ski boots. Manufacturing walking and tennis shoes was the next step in the Diadora life cycle. The 1970's brought about a generation with an explosive interest in athletics and the sporting industry. During this time, Diadora shoes became more technologically advanced with the help and advice of the era's great sport champions. It was also during the 1970's that Diadora broke into the soccer market.

Diadora's history of soccer athletes includes famous names such as Roberto Bettega, Roberto Baggio, Daniel Guiza, Filippo Inzaghi, Francesco Totti, etc.

Diadora continues to take pride in the quality and excellence of our products. The athletes of Diadora are the champions of yesterday, today, and tomorrow. The company does not boast a fabricated history, but a story of authenticity. Diadora is a tale of a family business that started in Italy, grew in Italy, and is still proud to be manufactured in Italy.



BRASIL K-PLUS MG14

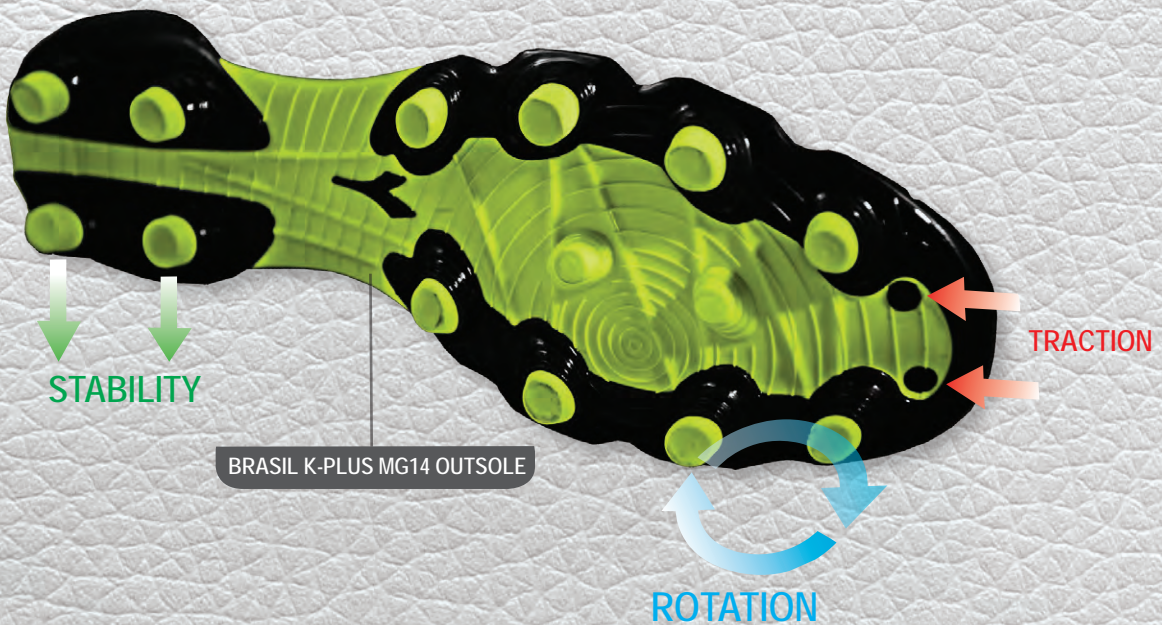
COMPONENTS



LEATHER UPPER



ANATOMIC INSOLE



DIADORA TECHNOLOGY



FOOTWEAR AND APPAREL ICONS



AXELER

Diadora's revolutionary new system that facilitates the natural movement of the foot, improving player performance. Axeler Technology features a thread-like frame in Tech Alloy, a special harmonic steel wire that is flexible, tough and extremely light weight. This frame is inserted into the sole, increasing forefoot flexibility while ensuring maximum stability along the sole and heel area.



AXELER TI

By introducing Nanoflex®, an innovative material that combines titanium and molybdenum components, Axeler further improves upon an already exceptional technology. Axeler's re-engineered shape and materials provide greater spring-back elasticity. Therefore, increasing flex and reactivity. Thus, the elite player will experience increased acceleration, jumping, and turning.



AXELER HEEL PROPULSION

Guarantees maximum shock absorption in the heel area while limited midsole torsion.



DOUBLE ACTION

This exclusive Diadora system optimizes performance and protection. A gummy elastomer in the heel area absorbs shock while a highly flexible elastomer in the forefoot boosts forward thrust, enhancing flexibility and dispersing sole pressure for improved performance.



DOUBLE ACTION 2 PLUS

The Double Action shock absorption has been improved and made "three-dimensional." The back part in elastomer ends with four "pistons" inserted directly into the back studs. This solution absorbs negative vibration at point of impact. The front part gives more power to the push in the front part of the foot.



ERGOS SLIPLAST

Very light and flexible because of the sock-like construction with no lasting board allows the foot to feel the full cushioning features of the Ergos football.



ERGOS NP

Ergos N.P. is the anatomic footbed that is composed of 2 layers of material. The nylon material in the rear foot provided needed rigidity for stability. The polypropylene material in the forefoot increases flexibility.



KANGAROO LEATHER

Constructed of premium, full grain kangaroo leather.



ENGAGE INSOLE

Anatomic insole featuring Dupont's exclusive Engage material that offers exceptional flexibility and is extremely lightweight. Engage assures maximum comfort, shock absorption, and reduces foot perspiration problems through a sanitized anti-bacterial treatment.



MORPHO CAGE S

Morpho Cage S is the particular heat-sealed cage made from soft TPU, and directly applied to the internal side of the upper, guaranteeing perfect closure and evenly distributing pressure on the foot, while improving foot stability during thrust phase thanks to the integration with sole and upper.



FLEX-ROTAX SYSTEM

Circular positioning of the studs in the forefoot facilitates turning in all phases of play with special studs to ensure traction. Multi-density outsole provides stability in the arch and heel, and strategic forefoot grooves allow exact forefoot flexion.



SUPER3LPRO

SuprellPro3L is made from a special microfiber integrated with the external surface (upper) and the upper internal lining into a single structure.



FIBER TECH LASTING BOARD

An extremely lightweight lasting board composed of webbed nylon and contains flex grooves in the forefoot for flexion.



MICROFIBER

Microfiber guarantees maximum lightness and sensitivity.



REMOVABLE ANKLE

Removable ankle pad for use with and without



High Grip Zone

HIGH GRIP ZONE

The special lining, consisting of a smooth upper part and a textured lower part, guarantees perfect grip between foot and shoe reducing pressure areas and preventing micro-traumas due to rubbing.



NET BREATHING SYSTEM

NET BREATHING SYSTEM™

The synthetic fiber net and the special breathable, waterproof membrane of the sole improve breathability while keeping feet dry and moisture, mud and debris out of the shoe.



TOUCH CONTROL

TOUCH CONTROL

A special application on the upper optimizes ball control. An extremely lightweight lasting board composed of webbed nylon and contains flex grooves in the forefoot for flexion.



TOUCH COUNTER

TOUCH COUNTER

Touch Counter is a special ergonomic support in the heel area for improved grip and ball control at the back of the shoe.



MICROBE BARRIER

MICROBE BARRIER

Special anti-bacterial treatment applied to the internal shoe fabric. The bactericide treatment stays after several washes.



WOMAN'S LAST

WOMAN'S LAST

Shoe developed on a last which reflects the specific ergonomics of the female foot.



EVS

EVS

Diadora's Engineered Venting System (EVS) technology allows the garment to "breathe". Air vents and mesh are strategically placed, to ventilate the areas where the body produces the most heat.



DIADRY

DIADRY

DiaDry fabrics are engineered to perform according to the needs of today's player. DiaDry's technically advanced fibers and finish enable moisture to be transported away from the body to the outer surface of the garment, where it quickly evaporates.



WEATHER RESISTANT

WEATHER RESISTANT

Specifically treated fabrics protect players from the elements.



FIFA APPROVED

FIFA APPROVED

The "FIFA Approved" mark means that the ball has passed 7 tests assuring the highest quality.



FIFA INSPECTED

FIFA INSPECTED

The "FIFA Inspected" mark means that the ball has met all necessary criteria for professional use in training. Tests include circumference, weight, rebound, and water absorption.



SEALED SEAMS

SEALED SEAMS

All seams are completely sealed so that water does not enter through.



SEAMLESS CONSTRUCTION

SEAMLESS CONSTRUCTION

The garment has no seams allowing for the best comfort and excellent fit; wrapping around the body for a "nude" feel.



WOMEN'S FIT

WOMEN'S FIT

Women specific specs.



YOUTH SIZE

YOUTH SIZE

Product is also available in youth sizes.



NEW ITEM

NEW ITEM

Product is a new launch to the Diadora Collection.



NEW COLORS

NEW COLORS

Product has new COLORS to the Diadora Collection.



NEW SIZE

NEW SIZE

Product has new SIZE to the Diadora Collection.



POWER FLOW

POWER FLOW

Innovative ventilation system composed of a series of side holes directly connected to the area of the insole and of holes in the medial area ensuring good ventilation and breathability of the foot while running. In case of rain, the holes also act as drainage points for water from the inside of the shoe.



MADE IN ITALY

MADE IN ITALY

This shoe has been hand crafted in Italy to guarantee maximum softness and most comfortable fit.

NET BREATHING SYSTEM™

NET BREATHING SYSTEM™

The innovative and exclusive NET Breathing System™ lets feet breathe. Improves performance by increasing concentration, endurance and precision.

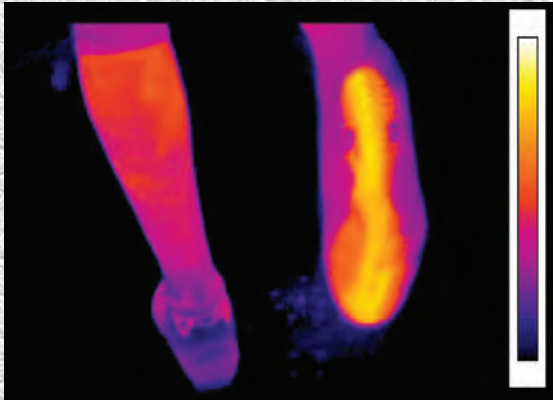
THE PATENT: NET Breathing System™

The synthetic fibre net and the special breathable, waterproof membrane of the sole improve breathability while keeping moisture, mud and debris out of the shoe and feet dry.

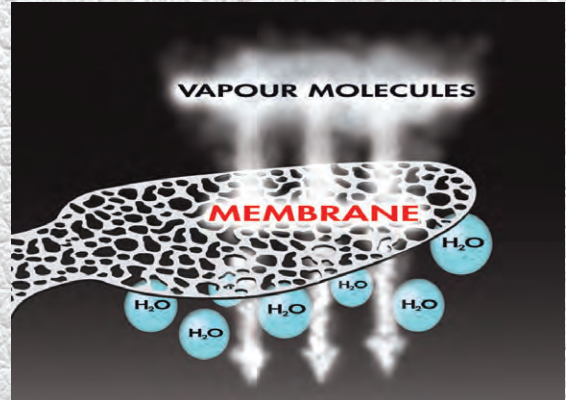
THE PATENT



The Benefits



Computerised thermal imaging shows that the NET Breathing System™ minimizes the barrier to foot breathability, expelling excess heat through most of the sole surface.



The breathable waterproof membrane improves sole breathability, while keeping moisture out of the shoe.

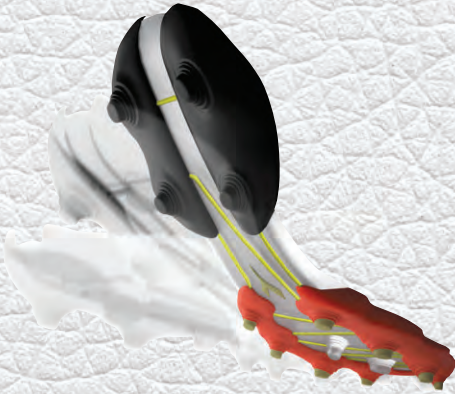
DIADORA TECHNOLOGY



AXELER TECHNOLOGY

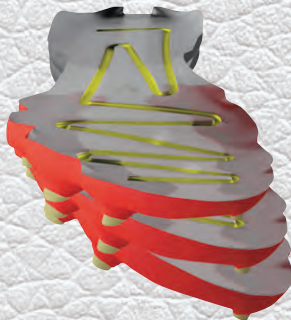
Performance

The introduction of new nano-technologies has permitted the use of Nanoflex®, an innovative material combining titanium components and molybdenum, thus giving Axeler technology that quality leap forward in performance. The new material the body is made of increases the shoe's reactivity, also improving bending progression and elasticity. Not only faster sprinting, but also faster dribbling and side movements. Axeler Ti holds the foot better as it springs off the ground, when it lands, heads the ball and does acrobatics.



Progressive Flex and Elastic Action

The particular form and elastic structure of the Axeler system ensure progressive flex and elastic action in the forefoot area improving initial thrust, acceleration and reaction times when sprinting and running.



Elastic Flex Action

The design of the forefoot of Axeler follows the natural curvature of the foot so it helps and facilitates flex action and torsion movement, typical while dribbling or for outside and inside ball touch.

MG14 TECHNOLOGY

OUTSOLE MG14

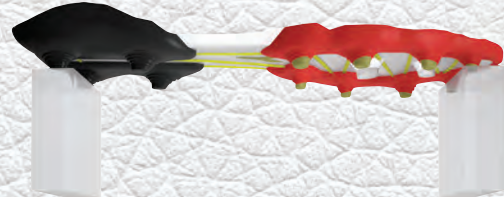
The MG14 outsole is the result of a strict cooperation between Diadora Research Centre and the Institute of Bioengineering of Milan Polytechnic. It was studied to guarantee maximum comfort on both natural terrain and new generation synthetic fields.

A long study period both in laboratory and on the field has helped us to find the best placing, number and shape of studs for the better performance in all games phases.

- 1- The studs layout is studied to improve the plant pressure distribution especially in the first metatarsus point, increasing fit comfort.
- 2- The studs shape has a cone-pyramidal base.
- 3- The 14 studs provide perfect stability and considerably improved abrasion resistance.
- 4- The circular studs layout, Flex Rotax, in the metatarsus area improves the spring. Laboratory tests and field experience have proved the system reduces torsion load both on the knee and ankle.
- 5- The integrated action of Axeler and Flex Rotax system increase the athletes performance.

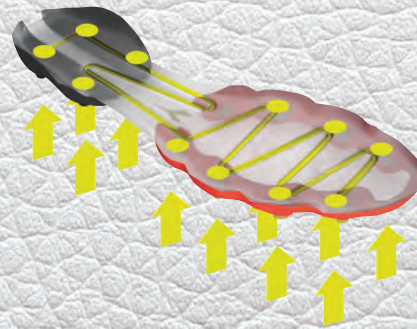
Comfort

A new "over-sized" base guarantees unbelievable comfort. The Axeler Ti system, integrated to the sole, is now wider thus distributing pressure better. This means greater foot stability, thanks to more effective load distribution and a clear advantage in fit/comfort terms.



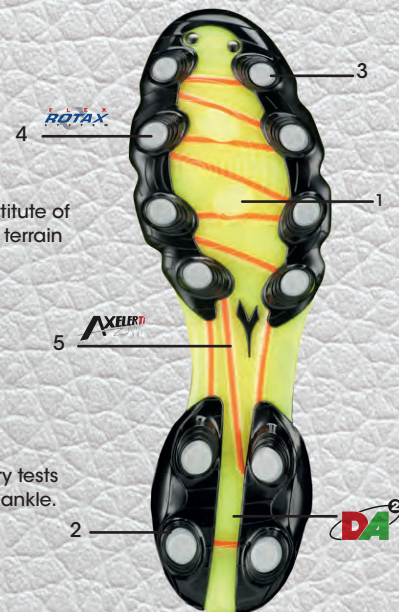
Stability And Support

On the sole of the foot and the heel, the Axeler structure guarantees sole rigidity which offers exceptional support and maximum stability.



Load Distribution

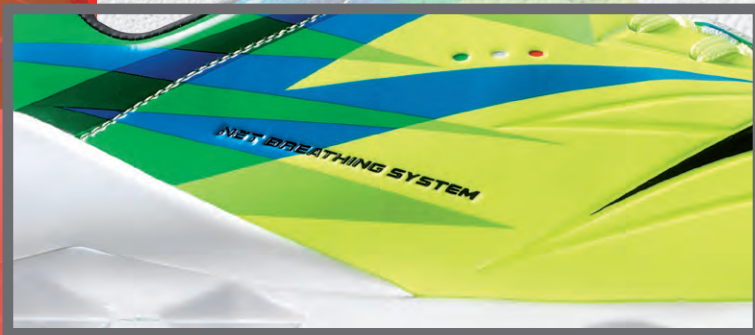
Axeler connects all the studs without interruptions, to distribute the body weight homogeneously over the plantar support. The boot therefore improves the balance of the athlete in the different stages of play, ensuring excellent underfoot comfort.



DD-NA2 GLX 14

1

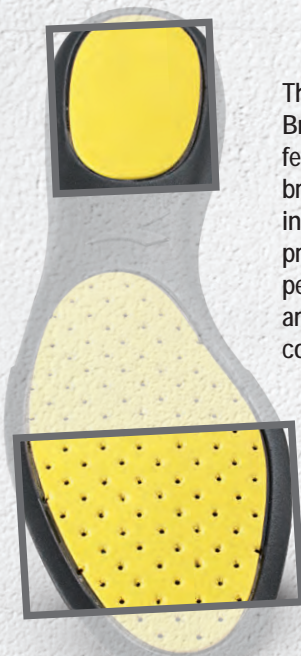
LIGHTNESS



SuprellPro3L, with integrated lining, makes the construction of DD-NA2 GLX14 even lighter, while enhancing its sensitivity. Thanks to its particular structure, it can perfectly fit any foot shape without having to add padding to the traditional football shoe. SuprellPro3L, combined with Morpho Cage S - the particular heat-sealed internal cage - provides comfort and top resistance during sport performance in all game conditions. DD-NA2 GLX14: ultimate power in only 180 grams.

2

BREATHABILITY AND IMPERMEABILITY



Thanks to the exclusive and innovative Net Breathing System™, DD-NA2 GLX14 features a sole that guarantees high breathability, keeping the foot dry while increasing concentration, resistance and precision in every game phase. The new perforated and breathable insole features areas with different densities to improve comfort and life.

NET BREATHING SYSTEM™
Geox licensed technology



3

FREEDOM AND REACTIVITY



Thanks to the Flex Rotax System, DD-NA2 GLX 14 provides maximum reactivity when releasing from ground, thus avoiding dangerous torsions of the forefoot. Moreover, featuring blade-type cleats with bi-triangular section and special position and design, DD-NA2 GLX14 attacks the playfield with an improved grip during the thrust phase and enhances player's power.



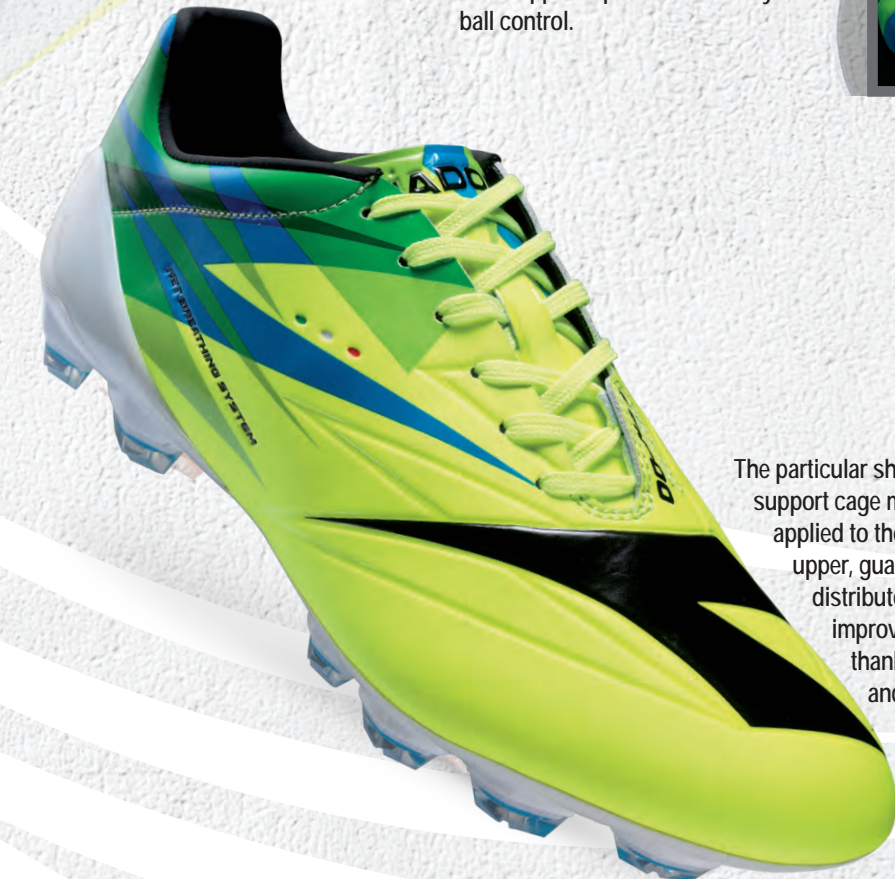
GENETICS

Studies carried out at the Diadora Research Centre proved that the load-bearing structure of the GLX14 sole, with integrated cup, provides higher stability to the foot during both thrust and flexion phases thanks to the beam structure that proportionally distributes flexion strength.

Moreover, DD-NA2 GLX14 features a new shape specifically designed by Diadora engineers to meet the technical requirements of the most advanced and demanding football players: the fit is enhanced thanks to a slimmer design on strategic points and an improved wrap-around effect on the foot for a better feeling in terms of lightness and dynamism, as required by modern football. The integrated touch control treatment on the upper improves sensitivity and ball control.



The particular shape of Morpho Cage S, the internal support cage made from soft TPU and directly applied to the internal side of the DD-NA2 GLX14 upper, guarantees perfect closure and evenly distributes pressure on the foot, while improving foot stability during thrust phase thanks to the integration with sole and upper.



DIADORA FOOTWEAR

INDOOR/RUNNING

TURF

OUTDOOR

KANGAROO



BRASIL ITALY OG
MSRP:\$374.99



BRASIL ITALY OG
MSRP:\$374.99



BRASIL K-PLUS MG14
MSRP:\$209.99

LEATHER



BRASIL ITALY LT
MSRP:\$299.99



BRASIL ITALY LT
MSRP:\$299.99



BRASIL ITALY LT
MSRP:\$299.99



MARCANA LT MG14
MSRP:\$139.99



MARCANA LT MG14
MSRP:\$139.99



MARCANA LT MG14
MSRP:\$139.99



BRASIL LT MDPU 25
MSRP:\$134.99



ITA3 LT MD PU
MSRP:\$124.99



ZONDA 10 LT MD PU
MSRP:\$99.99



MARCANA LT MG14 W
MSRP:\$139.99



CAPITANO LT MD PU W
MSRP:\$119.99

MICROFIBER/ SYNTHETIC



DD-NA2 GLX14
MSRP:\$199.99



DD-NA2 GLX14
MSRP:\$199.99



DD-NA2 GLX14
MSRP:\$199.99



BRASIL R MDPU
MSRP:\$89.99



7FIFTY MG14
MSRP:\$79.99



ITA3 MD PU JR
MSRP:\$69.99



DD-NA2 R LPU JR
MSRP:\$69.99



DD-NA2 R LPU JR
MSRP:\$69.99



650 II MDPU
MSRP:\$64.99



650 III MD JR
MSRP:\$49.99



BRASIL LT TF
MSRP:\$129.99



ZONDA 10 LT TF
MSRP:\$99.99



QUINTO 6 TF
MSRP:\$89.99



DD-NA2 R TF
MSRP:\$74.99



QUINTO IV TF
MSRP:\$69.99



ITA3 TF JR
MSRP:\$64.99



QUINTO III TF
MSRP:\$64.99



7FIFTY TF
MSRP:\$64.99



7FIFTY TF JR
MSRP:\$54.99



650 III TF JR
MSRP:\$49.99



CLASSICO ARIS TF JR
MSRP:\$49.99



CLASSICO ARIS TF JR
MSRP:\$49.99



CAPITANO LT TF W
MSRP:\$119.99



ZONDA 10 LT ID
MSRP:\$99.99



QUINTO 6 ID
MSRP:\$89.99



QUINTO 6 ID
MSRP:\$89.99



QUINTO IV ID
MSRP:\$69.99



QUINTO III ID
MSRP:\$64.99



7FIFTY ID
MSRP:\$64.99



650 III ID
MSRP:\$59.99



7FIFTY ID JR
MSRP:\$54.99



7FIFTY ID JR
MSRP:\$54.99

DIADORA



BRASIL ITALY OG

170852

NEW
ITEM

KANGAROO
LEATHER

DA

ERGOS^{NP}

MADE IN ITALY



Created with the specific aim of ensuring that even the most demanding players receive a high-quality product, with excellent performance, "Brasil Italy OG" has an Italian-made upper of full-grain kangaroo leather with water-repellent treatment and quilted front to guarantee maximum softness to the touch as well as full support and a comfortable fit.

Thanks to the hydro-tech microfiber used to line the interior and tongue, the boot padding is always kept dry and comfort is guaranteed, even in the wet. The Ergos NP fitted anatomical footbed, in nylon and polypropylene, ensures lightness and flexibility while guaranteeing maximum performance and extreme comfort. What is more, thanks to the introduction of the exclusive Double Action system, designed to absorb shock, and the particular shape of the removable bi-density insole, the shoe neutralises all negative vibrations to maintain stability during play.

- Made in Italy
- Kangaroo leather with water-repellent treatment
- Hydro-tech microfiber interior and tongue
- Ergos NP
- Double Action system

OUTSOLE: Differentiated density polyurethane with 12 fixed studs.

SIZES: 6-12H

COLORS:
C0641 Black/White
C3064 White/Royal

AVAILABLE: June 2016

MSRP: \$374.99



DIADORA FOOTWEAR

BRASIL ITALY LT

170854

NEW
ITEM

MADE IN ITALY



UPPER: Ultrasoft water resistant Calf Skin leather. Anti-stretch fabric lining and anti-slip rear lining. Sock liner with bending points in the forefoot area.

INSOLE: Anatomical, made from fabric and shock-absorbing EVA elastomer.

MIDSOLE: Anti-shock E.V.A. foam.

OUTSOLE: Differentiated density polyurethane with 12 fixed studs.

COLORS:
C1970 Royal/White
C0641 Black/White
C0351 White/Black

SIZES: 6-12H

AVAILABLE: June 2016

MSRP: \$299.99



DIADORA FOOTWEAR

BRASIL K-PLUS MG14 170856



UPPER: Water resistant ultra soft kangaroo leather. Anti-stretch PU lining. Sock liner with bending points in the forefoot area.
 INSOLE: Anatomical, made from fabric and shock-absorbing EVA elastomer.
 OUTSOLE: Differentiated bi-density polyurethane with 14 fixed studs.

COLORS: C0004 Black/Fluo Yellow
 SIZES: 6H-12
 AVAILABLE: July 2016
 MSRP: \$209.99

BRASIL LT MDPU 25 170860



UPPER: Full grain water resistant "Soccer" leather. Anti-stretch lining and anti-slip rear lining. Sock liner with bending points in the forefoot area. Suede reinforced toe cap.
 INSOLE: Synthetic and shock-absorbing E.V.A. foam.
 OUTSOLE: Differentiated density polyurethane with 25 fixed studs.

COLORS: C0004 Black/Fluo Yellow
 SIZES: 6H-12H
 AVAILABLE: July 2016
 MSRP: \$134.99

BRASIL LT TF 170862



UPPER: Full grain water resistant "Soccer" leather. Anti-stretch lining and anti-slip rear lining. Sock liner with bending points in the forefoot area. Suede reinforced toe cap.
 INSOLE: Synthetic and shock-absorbing E.V.A. foam.
 MIDSOLE: Anti-shock E.V.A. foam.
 OUTSOLE: Anti-abrasion rubber.

COLORS: C0004 Black/Fluo yellow
 SIZES: 6H-12H
 AVAILABLE: July 2016
 MSRP: \$129.99



ITA3 LT MDPU 161461

UPPER: 100% Ultra-soft water repellent full grain leather upper with Touch Control finish throughout the upper for enhanced first touch.
 INSOLE: Synthetic and shock absorbing E.V.A. foam.
 OUTSOLE: Molded PU sole with 12 fixed studs.

COLORS: C0641 Black/White
 SIZES: 6H-12H
 AVAILABLE: Immediate
 MSRP: \$124.99



BRASIL R MDPU 170864

UPPER: Water resistant Suprellsoft. Anti-stretch lining and anti-slip rear lining. Sock liner with bending points in the forefoot area.
 INSOLE: Synthetic and shock-absorbing E.V.A. foam.
 OUTSOLE: Differentiated density polyurethane with 12 fixed studs.

COLORS: C1970 Royal/White
 SIZES: 6H-12H
 AVAILABLE: July 2016
 MSRP: \$89.99



ITA3 MDPU JR 161489

UPPER: Water resistant Suprellsoft, anti slip lining.
 INSOLE: Nylon, synthetic and shock absorbing E.V.A. foam.
 OUTSOLE: Differentiated density polyurethane with 12 fixed studs.

COLORS: C0001 Fluorescent Yellow/Black
 SIZES: 13, 1-6
 AVAILABLE: Immediate
 MSRP: \$69.99



ITA3 TF JR 161491

UPPER: Water resistant Suprellsoft, anti slip lining
 INSOLE: Nylon, synthetic and shock absorbing E.V.A. foam.
 OUTSOLE: Multi studded rubber outsole for superior traction on turf and hard natural grounds

COLORS: C0001 Fluorescent Yellow/Black
 SIZES: 10H, 11H, 12, 13, 1-6
 AVAILABLE: Immediate
 MSRP: \$64.99



DD-NA2 GLX14 158956



NET BREATHING SYSTEM™
Geox Licensed technology

UPPER: SuprellPro3L with integrated lining. Special touch control treatment.
 INSOLE: Removable and anatomical, perforated and breathable (NET Breathing System™), made from fabric and bi-density shock-absorbing EVA elastomer. Anti-bacterial treatment.
 OUTSOLE: Dual density polyurethane technology outsole made from Pebax. The synthetic fiber net and breathable, waterproof membrane of the outsole improved breathability while keeping moisture, mud and debris out of the shoe and feet dry (NET Breathing System™). 14 integrated cup cone shaped polyurethane blade type cleats.

COLORS:
 C4686 Yellow Fl. DD/Green Glade/Black
 C5703 Tuareg Blue/Fluo Green
 C0138 Flame Red/Super White

SIZES: 5-12H

AVAILABLE: Immediate

MSRP: \$199.99



DD-NA2 R LPU JR 159271



UPPER: Water resistant Suprellsoft. Anti-stretch lining and anti-slip PU rear lining. Sockliner with bending points in the forefoot area.
 INSOLE: Nylon, synthetic and shock-absorbing E.V.A. foam.
 OUTSOLE: Dual density polyurethane technology outsole with 14 fixed studs.

COLORS:
 C5702 White/Black/Fluorescent Yellow
 C5703 Tuareg blue/fluo green

SIZES: 13,1-6

AVAILABLE: Immediate

MSRP: \$69.99



DD-NA2 R TF 159269



UPPER: Water resistant Suprellsoft. Anti-stretch lining and anti-slip PU rear lining. Sockliner with bending points in the forefoot area.
 INSOLE: Fabric and shock-absorbing E.V.A. foam.
 OUTSOLE: Multi-studded rubber outsole provides superior traction on hard natural surface.

COLORS:
 C0138 Flame Red/Super White

SIZES: 6H-12H

AVAILABLE: Immediate

MSRP: \$74.99





MARACANA LT MG14 717727

UPPER: : Ultra-soft, water resistant, calfskin leather upper. Anti-stretch lining to ensure shape retention. Partial hidden loop lacing system for a more uniform kicking surface. Touch Control application for exact touch. Soft ankle collar lining for comfort.
 INSOLE: Removable cotton and shock absorbing EVA foam.
 OUTSOLE: Lightweight dual density PU MG14 outsole provides superior traction, flexion and stability on natural and synthetic surfaces.

COLORS:
 C545 Red/ White
 C580 Blue/White
 C641 Black/White
 SIZES: 6H-12, 13
 AVAILABLE: Immediate
 MSRP: \$139.99



MARACANA LT MG14 W 713726

UPPER: : Ultra-soft, water resistant, calfskin leather upper. Anti-stretch lining to ensure shape retention. Partial hidden loop lacing system for a more uniform kicking surface. Touch Control application for exact touch. Soft ankle collar lining for comfort.
 INSOLE: Removable cotton and shock absorbing EVA foam.
 OUTSOLE: Lightweight dual density PU MG14 outsole provides superior traction, flexion and stability on natural and synthetic surfaces.

COLORS:
 C874 Black/Fluorescent Yellow
 SIZES: 5-11 [women's]
 AVAILABLE: Immediate
 MSRP: \$139.99



CAPITANO LT MDPW 715014

UPPER: Soft, full grain leather upper. Touch Control finish throughout the upper for enhanced first touch
 INSOLE: Fixed cotton and shock-absorbing EVA foam.
 OUTSOLE: Traditional multi-density MD PU outsole.

COLORS:
 C5082 White/Teal/Yellow/Pink
 SIZES: 5 - 11 [women's]
 AVAILABLE: Immediate
 MSRP: \$119.99



CAPITANO LT TF W 715214

UPPER: Soft, full grain leather upper. Touch Control finish throughout the upper for enhanced first touch.
 INSOLE: Fixed cotton and shock-absorbing EVA foam.
 MIDSOLE: Shock absorbing EVA wedge.
 OUTSOLE: Abrasion resistant gum rubber.

COLORS:
 C5082 White/Teal/Yellow/Pink
 SIZES: 5 - 11 [women's]
 AVAILABLE: Immediate
 MSRP: \$119.99



7FIFTY MG14 170876

NEW ITEM



UPPER: Water resistant Suprell. Anti-stretch lining and anti-slip PU rear lining. Sockliner with bending points in the forefoot area.
INSOLE: Synthetic and shock-absorbing E.V.A. foam.
OUTSOLE: Differentiated bi-density polyurethane with 14 fixed studs.

COLORS: C0004 Black/ Yellow Fluo
SIZES: 6H-12H
AVAILABLE: August 2016
MSRP: \$79.99



7FIFTY TF 170878

NEW ITEM



UPPER: Water resistant Suprell. Anti-stretch lining and anti-slip PU rear lining. Sock liner with bending points in the forefoot area.
INSOLE: Synthetic and shock-absorbing E.V.A. foam.
MIDSOLE: Anti-shock E.V.A. foam.
OUTSOLE: Anti-abrasion rubber..

COLORS: C0001 Yellow Fluo/Black
SIZES: 6H-12H
AVAILABLE: August 2016
MSRP: \$64.99



7FIFTY ID 170879

NEW ITEM



UPPER: Water resistant Suprell. Anti-stretch lining and anti-slip PU rear lining. Sock liner with bending points in the forefoot area.
INSOLE: Synthetic and shock-absorbing E.V.A. foam.
MIDSOLE: Anti-shock E.V.A. foam.
OUTSOLE: Anti-abrasion rubber.

COLORS: C0001 Yellow Fluo/Black
SIZES: 6H-12H
AVAILABLE: August 2016
MSRP: \$64.99



DIADORA FOOTWEAR

NEW
ITEM

7FIFTY TF JR 170895

UPPER: Water resistant Suprell. Anti-stretch lining.
INSOLE: Nylon, synthetic and shock-absorbing E.V.A. foam.
MIDSOLE: Anti-shock E.V.A. foam.
OUTSOLE: Anti-abrasion rubber.

COLORS:
C0001 Yellow Fluo/Black
SIZES: 10H, 11H, 12, 13, 1-6
AVAILABLE: August 2016
MSRP: \$54.99



NEW
ITEM

7FIFTY ID JR 170896

UPPER: Water resistant Suprell. Anti-stretch lining.
INSOLE: Nylon, synthetic and shock-absorbing E.V.A. foam.
MIDSOLE: Anti-shock E.V.A. foam.
OUTSOLE: Anti-abrasion rubber.

COLORS:
C0001 Yellow Fluo/Black
C6013 Black/Fluo Blue/White
SIZES: 10H, 11H, 12, 13, 1-6
AVAILABLE: August 2016
MSRP: \$54.99



650 II MDPU 161474

UPPER: water resistant Suprell. Antistretch lining and anti-slip PU rear lining. Sockliner with bending points in the forefoot area.
INSOLE: Nylon, synthetic and shockabsorbing E.V.A. foam
OUTSOLE: Differentiated density polyurethane with 12 fixed studs.

COLORS:
C0641 Black/White
SIZES: 6H-12H
AVAILABLE: Immediate
MSRP: \$64.99



DIADORA FOOTWEAR

650 III ID 170907

NEW
ITEM



UPPER: Water resistant Suprell. Anti-stretch lining and anti-slip PU rear lining. Sock liner with bending points in the forefoot area.
INSOLE: Synthetic and shock-absorbing E.V.A. foam.
MIDSOLE: Anti-shock E.V.A. foam.
OUTSOLE: Anti-abrasion rubber.

COLORS: C5877 Royal/Fluo Red
SIZES: 6H-12H
AVAILABLE: August 2016
MSRP: \$59.99



650 III MD JR 170908

NEW
ITEM



UPPER: Water resistant Suprell. Anti-stretch lining.
INSOLE: Nylon, synthetic and shock-absorbing E.V.A. foam.
MIDSOLE: Anti-shock E.V.A. foam.
OUTSOLE: Differentiated density rubber with 14 fixed studs. Sewn onto front of upper.

COLORS: C5877 Royal/Fluo Red
SIZES: 10H, 11H, 12, 13, 1-6
AVAILABLE: August 2016
MSRP: \$49.99



650 III TF JR 170909

NEW
ITEM



UPPER: Water resistant Suprell. Anti-stretch lining.
INSOLE: Nylon, synthetic and shock-absorbing E.V.A. foam.
MIDSOLE: Anti-shock E.V.A. foam.
OUTSOLE: Anti-abrasion rubber.

COLORS: C5877 Royal/Fluo Red
SIZES: 10H, 11H, 12, 13, 1-6
AVAILABLE: August 2016
MSRP: \$49.99



FLEX
SYSTEM

TC
TOUCH CONTROL

NEW
ITEM

QUINTO 6 ID 170881

UPPER: Nylon mesh with SuprellTech inserts to reinforce strike areas. Anti-stretch lining and anti-slip rear lining.
INSOLE: Synthetic and shock-absorbing E.V.A. foam.
MIDSOLE: Anti-shock Moulded EVA foam.
OUTSOLE: Abrasion-resistant rubber.

COLORS:
C1467 Red/Black/White
C1141 Classic Navy/White
SIZES: 5-12
AVAILABLE: August 2016
MSRP: \$89.99



FLEX
SYSTEM

TC
TOUCH CONTROL

NEW
ITEM

QUINTO 6 TF 170880

UPPER: Nylon mesh with SuprellTech inserts to reinforce strike areas. Anti-stretch lining and anti-slip rear lining.
INSOLE: Synthetic and shock-absorbing E.V.A. foam.
MIDSOLE: Anti-shock Moulded EVA foam.
OUTSOLE: Abrasion resistant gum rubber.

COLORS:
C1467 Red/Black/White
SIZES: 5-12
AVAILABLE: August 2016
MSRP: \$89.99



CLASSICO ARIS TF JR 157481

UPPER: Water resistant Superlsoft. Anti-stretch lining anti-slip rear lining.
INSOLE: Fixed cotton and shock-absorbing EVA foam.
OUTSOLE: Multi-studded rubber outsole provides superior traction on hard natural surface and synthetic turf.

COLORS:
C0641 Black/White
C2029 White/Azure Blue
SIZES: 2-6
AVAILABLE: Immediate
MSRP: \$49.99



QUINTO IV TF 160206



UPPER: Water resistant Suprelltech and nylon mesh. Anti-stretch lining and anti-slip rear lining. SlipLasted manufacturing.
 INSOLE: Cotton and shock-absorbing EVA foam.
 MIDSOLE: Molded EVA foam for cushioning.
 OUTSOLE: Multi-studded rubber outsole provides superior traction on hard natural surfaces and synthetic turf.

COLORS:
C0355 Lime Cream/Fluorescent Red

SIZES: 4-12

AVAILABLE: Immediate

MSRP: \$69.99



QUINTO IV ID 160219



UPPER: Water resistant Suprelltech and nylon mesh. Anti-stretch lining and anti-slip rear lining. SlipLasted manufacturing.
 INSOLE: Cotton and shock-absorbing EVA foam.
 MIDSOLE: Molded EVA foam for cushioning.
 OUTSOLE: Non-marking gum-rubber outsole.

COLORS:
C0355 Lime Cream/Fluorescent Red

SIZES: 4-12

AVAILABLE: Immediate

MSRP: \$69.99



QUINTO III TF 158462



UPPER: Water resistant Suprelltech and nylon mesh. Anti-stretch lining and anti-slip rear lining. SlipLasted manufacturing.
 INSOLE: Cotton and shock-absorbing EVA foam.
 MIDSOLE: Molded EVA foam for cushioning.
 OUTSOLE: Multi-studded rubber outsole provides superior traction on hard natural surfaces and synthetic turf.

COLORS:
C4032 White/Deep Blue/Purple

SIZES: 4-12

AVAILABLE: Immediate

MSRP: \$64.99



QUINTO III ID 158463



UPPER: Water resistant Suprelltech and nylon mesh. Anti-stretch lining and anti-slip rear lining. SlipLasted manufacturing.
 INSOLE: Cotton and shock-absorbing EVA foam.
 MIDSOLE: Molded EVA foam for cushioning.
 OUTSOLE: Non-marking gum-rubber outsole.

COLORS:
C4032 White/Deep Blue/Purple

SIZES: 5-12

AVAILABLE: Immediate

MSRP: \$64.99





ZONDA 10 LT MDPU 157456

UPPER: Full grain water resistant leather.
 Anti-stretch lining anti-slip rear lining.
 Fibertech sock liner with bending points
 in the forefoot areas
 INSOLE: Cotton and shock-absorbing
 EVA foam.
 OUTSOLE: Differentiated density
 polyurethane with 12 fixed studs.

COLORS:
 C2007 Silver DD/Molten Lava Red
 SIZES: 6-12H
 AVAILABLE: Immediate
 MSRP: \$99.99



ZONDA 10 LT TF 157459

UPPER: Full grain water resistant leather.
 Anti-stretch lining anti-slip rear lining.
 Fibertech sock liner with bending points
 in the forefoot areas. Suede reinforce
 toe cap
 INSOLE: Cotton and shock-absorbing
 EVA foam.
 MIDSOLE: EVA foam in the heel area.
 OUTSOLE: Multi-studded rubber outsole
 provides superior traction on hard
 natural surface.

COLORS:
 C2007 Silver DD/Molten Lava Red
 SIZES: 7-12
 AVAILABLE: Immediate
 MSRP: \$99.99



ZONDA 10 LT ID 157483

UPPER: Full grain water resistant leather.
 Anti-stretch lining anti-slip rear lining.
 Fibertech sock liner with bending points
 in the forefoot areas. Suede reinforce
 toe cap.
 INSOLE: Cotton and shock-absorbing
 EVA foam. MIDSOLE: EVA foam in the heel
 area.
 OUTSOLE: Anti-abrasion, non-marking
 gum rubber outsole.

COLORS:
 C2007 Silver DD/Molten Lava Red
 SIZES: 6-12H
 AVAILABLE: Immediate
 MSRP: \$99.99



DIADORA



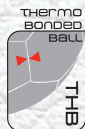
PERFORMANCE - FIFA APPROVED 158846

DETAILS: Professional match quality ball. Innovative construction. High end Thermobonded match level ball with Korean PU casing. Japanese form to give better cushioning and higher rebound. Sewn carcass for superior durability, rebound, and touch. Bonded construction does not absorb water, while maintaining its shape through rigorous use.

COLORS:
C4997 White/Sky Blue/Red

SIZES: 5

AVAILABLE: Immediate
MSRP: \$99.99



THERMAL BONDED
Low water uptake, more predictable trajectory and better touch



NEW ITEM

MONDIALE MODA III 881637

DETAILS: Match quality ball. Clear micro-fiber PU cover for unparalleled touch. Penetrating ink offers excellent graphic retention. Air Mattress system guarantees exact touch under all conditions. Diadora save pin technology guarantees minimal air loss in butyl valve. Four layered poly-cotton backing assures shape retention. Natural latex bladder guarantees match ball performance.

COLORS:
020425 White/Royal Blue/Fluorescent Yellow

SIZES: 4, 5

AVAILABLE: August 2016

MSRP: \$64.99



WORLD GAME BALL FIFA INSPECTED 158847

DETAILS: Hand stitched Machine quality, Soft PU Cover FIFA Inspected. Taiwan Butyl valve & Natural latex bladder game ball

COLORS:
C0008 White/Fluo Yellow/Black

SIZES: 5

AVAILABLE: Immediate

MSRP: \$59.99



DIADORA SOCCER BALLS

BRASIL BRIGHT BALL 170929

NEW ITEM



DETAILS: Luminescent training ball. Machine stitched ball. Butyl bladder and valve for superior air retention. Glow in the dark.

COLORS:
C0351 White/Black

SIZES: 5

AVAILABLE: August 2016

MSRP: \$44.99

Glow in the dark.

MAGNIFICO II GAME BALL 881620

NEW ITEM



DETAILS: Match quality ball. Soft PU Cover hand-stitched. Taiwan Butyl bladder and valve for superior air retention.

COLORS:
020331 White/Red/Black

SIZES: 4, 5

AVAILABLE: August 2016

MSRP: \$44.99

GARA II BALL 881510



DETAILS: Match quality ball. Micro-fiber polyurethane cover. High tenacity polyester filament stitching provides excellent durability. Closed cell 1.50mm AIR MATTRESS ensures soft touch under all temperature conditions. Seamless butyl bladder with self lubricating butyl valve offers superior air and shape retention.

COLORS:
024734 White/Fluorescent Green/ Navy

SIZES: 4, 5

AVAILABLE: Immediate

MSRP: \$39.99

DD-NA BALL 170926

NEW ITEM



DETAILS: Training and Camp Ball. Machine stitched, 32 panel ball. Butyl bladder and valve for superior air retention.

COLORS:
C6227 White/Fluo Blue
C6211 Fluo Yellow/Fluo Green

SIZES: 4-5

AVAILABLE: August 2016

MSRP: \$34.99

BARI III SOFT TOUCH BALL 881698

DETAILS: Hand stitched, 32 panel, Training quality ball. PU Cover with EVA foam backing provides soft touch under all conditions. Butyl bladder and valve for superior air retention.

COLORS:
024401 White/Aqua Blue/Black

SIZES: 3-4-5

AVAILABLE: Immediate

MSRP: \$34.99



L-025 SOFT TOUCH BALL 881602

DETAILS: Training and Camp Ball. Machine stitched, 32 panel ball. 4.20 mm PU with EVA foam. Rubber wound bladder.

COLORS:
060100 Orange/Black
541101Cyan Blue/Charcoal/Black

SIZES: 3-4-5

AVAILABLE: Immediate

MSRP: \$29.99



L-010 SOFT TOUCH BALL 881600

DETAILS: Training and Camp Ball. Machine stitched, 32 panel ball. Combination PU/PVC for a soft touch and durability. Butyl bladder and valve for superior air retention.

COLORS:
020313 White/Red/Maroon

SIZES: 3-4-5

AVAILABLE: Immediate

MSRP: \$24.99



FUTSALA ID FUTSAL BALL 881401

DETAILS: Game quality Futsal ball. Hand stitched 32 panel ball with soft PU stuffed butyl bladder & Butyl valve for superior air retention. Official futsal size and weight. Low Rebound.

COLORS:
022501 White/Fluo Yellow/Black

SIZES: 4

AVAILABLE: Immediate

MSRP: \$44.99



PERFORMANCE II PT HARD SHELL 881549



SLEEVE INCLUDED

DETAILS: Multi density, breathable, anatomically shaped shell for protection. Lines EVA foam padded backing for impact absorption and comfort. Low profile ventilated shell and foam backing allows for continuous air for comfort. Pocketed shin guard sleeve provides a secure and strapless fit. Shinguard pocketed sleeve included.

COLORS:
024734 White/Florescent Green/Navay
SIZES: M, L
AVAILABLE: Immediate
MSRP: \$34.99

EXTREME YOU II SHIN 881648



BACK VIEW

- Flexible
- Breathable
- Anatomically Shaped
- Regular closure
- Removable Ankle with EVA ankle
- Backside cushioning
- High quality reusable PVC bag

COLORS:
010631 Black/Orange/Silver
SIZES: M (8"), L (8.5")
AVAILABLE: Immediate
MSRP: \$39.99

ULTIMATE HARD SHELL 154519



BACK VIEW

- Multi-density, anatomical shaped PE shell provides superb protection
- Lightweight, low ventilated shell and foam backing for comfort
- Detachable ankle guard with disc inserts
- Velcro calf fastens in front of shell

COLORS:
C0351 White/Black
SIZES: S (7"), M (8"), L (8.5")
AVAILABLE: Immediate
MSRP: \$34.99

SCUDO PLUS HARD SHELL 881330



BACK VIEW

- High impact polypropylene shell for protection
- Lightweight, anatomically shaped low profile guard
- Ventilated shell for breathability
- Soft foam backing lined with brushed polyester provides a comfortable feel.
- Fixed ankle guard with EVA ankle discs to protect ankle bones.
- Velcro strap back

COLORS:
060100 Orange/Black
470100 Fluorescent Green/Black
SIZES: XS (6"), S (7"), M (8"), L (8.5"), XL (9")

AVAILABLE: Immediate
MSRP: \$24.99

FORZA II HARD SHELL 881540



BACK VIEW

- PVC hard shell absorbs impact
- Ventilated shell for breathability
- Perforated shell and EVA foam padding enhances breathability, comfort and decreases weight
- Rear fastening D-Ring single strap closure
- Fixed ankle guard

COLORS:
040100 Royal/Black
SIZES: XXS (5.5"), XS (6"), S (7"), M (8"), L (8.5")
AVAILABLE: Immediate
MSRP: \$19.99

FORZA II SOFT SHELL 881545



- Lightweight, low profile, flexible PE wands disperse impact
- Perforated EVA backing with smooth nylon lining absorbs impact
- Padded ankle and achilles for added protection
- Velcro strap front

COLORS:
470100 Fluorescent Green/Black
SIZES: 3XS (5"), 2XS (5.5"), XS (6"),
S (7"), M (8"), L (8.5")
AVAILABLE: Immediate
MSRP: \$16.99

BACK VIEW



ITALICA SLIP HARD SHELL 881555



- High impact PP hard shell
- Lightweight, anatomically shaped low profile guard
- EVA padded Backing
- Compression sleeve in Lycra

COLORS:
255401 Fluo Yellow/Cyan Blue/Black
SIZES: XS (6") .S (7"), M (8"), L (8.5")
AVAILABLE: Immediate
MSRP: \$24.99

SLEEVE INCLUDED



XERES SHIN 152655



- Lightweight, low profile, flexible PE wands disperse impact.
- Perforated EVA padding enhances breathability and decreases weight.
- 2 straps on back

COLORS:
C2296 White/Black/Gold
SIZES: S (7"), M (8"), L (8.5")
AVAILABLE: Immediate
MSRP: \$11.99

BACK VIEW



COMPRESSION SLEEVE WITH POCKET 880300

- Pocketed sleeve keeps guard in place
- Polyester/Lycra

COLORS:
010200 Black/White
020100 White/Black
SIZES: S, L
AVAILABLE: Immediate
MSRP: \$14.99



DUBLIN VELCRO ARMBAND 880032



Captain armband with Velcro closure. Diadora printed logo.

COLORS:
250100 Fluorescent Yellow/Black
012500 Black/Fluorescent Yellow
SIZES: JR - SR
AVAILABLE: Immediate
MSRP: \$6.99



ALUMINUM WATER BOTTLE 880200

Aluminum Water Bottle. 750ml capacity. Plastic cap twists open easily for best closure. Metal ring with clip to attach bottle to bag.

COLORS:
Black/White/Yellow
SIZES: 750ml
AVAILABLE: Immediate
MSRP: \$6.99



PRIMO BAG MEDIUM 888120



DETAILS: 600D Polyester Dobby with PVC Backing. Main compartment with zipper for access. 1 Side pocket for additional storage. Front pocket with zipper for keys, wallet, cell phone, etc. Removable padded shoulder strap.

COLORS:

030102 Red/Black/White
 040102 Royal/Black/White
 340102 Dark Navy/Black/White
 010102 Black/Black/White

SIZES: 21" x 10" x 10.75"

AVAILABLE: Immediate

MSRP: \$29.99



PLAYER SHOE BAG 888370



DETAILS: 420 denier nylon. Main compartment with front zipper for easy access to footwear. Side hook for easy carrying

COLORS:

010200 Black/White

SIZES: 13" x 6" x 5"

AVAILABLE: Immediate

MSRP: \$14.99



DIADORA TEAM BAG

GEAR BALL BAG 888245



DETAILS: 300D Polyester with PVC Backing combined with 100% Polyester Mesh. Large main compartment. Padded shoulder straps. Front zip pocket (sized to hold clipboard)

COLORS:

010200 Black/White

SIZES: 20" X 34"

AVAILABLE: Immediate

MSRP: \$49.99



NURNBERG BALL BAG 1299017

DETAILS: Polyester Mesh sides with straps to carry on back. Fits 10/12 balls.

COLORS:

80013 Black

AVAILABLE: Immediate

MSRP: \$29.99



DORTMUND TROLLEY BAG 1299004

DETAIL: 420 denier nylon with PVC backing. Main compartment with oversized ergonomic zippers. Two vented end pockets, one with shoe tunnel. Removable shoulder strap. Bungee zipper.

COLORS:
80013 Black/White

SIZES: 21.5" x 14" x 7"

AVAILABLE: Immediate

MSRP: \$89.99



TEAM BACKPACK 888400

DETAIL: 420 denier nylon with PVC Backing. Front vented ball pocket, side vented ball tunnel, and side vented accessory pocket. Front jacket straps. Padded anatomically shaped shoulder straps.

COLORS:
010200 Black/White

SIZES: 15 1/2" x 14" x 9"

AVAILABLE: Immediate

MSRP: \$44.99



UNI BACKPACK 888350

DETAILS: 420 denier nylon with PVC backing. Main front compartment with easy access zipper. Additional pockets on front and mini front pocket for keys, wallet, etc. Straps with mesh for comfort side mesh pocket for water bottle or other accessories.

COLORS:
010200 Black/White

SIZES: 19" X 11.75" X 9.75"

AVAILABLE: Immediate

MSRP: \$37.50



DETAILS: 420 denier nylon with PVC Backing. Main compartment with oversized ergonomic zippers. Two vented end pockets, one with shoe tunnel. Removable padded shoulder strap. Bungee zipper pulls.

COLORS:
010201 Black/White/Black
030201 Red/White/Black
040201 Royal/White/Black
070201 Forest Green/White/Black
140201 Navy/White/Black

SIZES: 25" x 11" x 11.5"

AVAILABLE: Immediate

MSRP: \$44.99



MEDIUM TEAM BAG 888330



CONQUER ELITE COLLECTION

CONQUER ELITE JERSEY 883350

DIADRY



DETAILS: 100% DiaDry Polyester.
Rice Mesh strategically placed under arms and side of jerseys.
Embroidered Diadora logos.

SIZES: YM, YL, YXL, S, M, L, XL
Black Jersey also available in YS

AVAILABLE: Immediate

MSRP: Jr: \$49.99
Sr: \$49.99

COLORS:
020201 White/White/Black logo
070200 Forest Green/White
030200 Red/White
040200 Royal/White
010200 Black/White



BACK



MESH SIDE PANEL

GAMMA SHORTS 884020

DIADRY

EVS



DETAILS: 100% DiaDry Polyester. Rice Mesh strategically placed on sides.
Felt Diadora logos. 7" inseam (SR), 6" inseam (JR).

SIZES: YXL, S, M, L, XL
Black Short also available in YM, YL

AVAILABLE: Immediate

MSRP: \$32.99

COLORS:
020201 White/White/Black Logo
070200 Forest Green/White
040200 Royal/White
030200 Red/White
010200 Black/White



GAMMA COLLECTION



GAMMA RETE JERSEY 883020

DETAILS: 100% DiaDry Polyester. Rice Mesh strategically placed under arms, back and on sleeves. Felt Diadora logos.

SIZES: YXL, S, M, L, XL
Black Jersey also available in YM, YL

AVAILABLE: Immediate

MSRP: \$49.99

COLORS:
070200 Forest Green/White
040200 Royal/White
030200 Red/White
010200 Black/White
020101 White/Black/Black



GAMMA SHORTS 884020

DETAILS: 100% DiaDry Polyester. Rice Mesh strategically placed on sides. Felt Diadora logos. 7" inseam (SR), 6" inseam (JR).

SIZES: YXL, S, M, L, XL
Black Short also available in YM, YL

AVAILABLE: Immediate

MSRP: \$32.99

COLORS:
020201 White/White/Black Logo
070200 Forest Green/White
040200 Royal/White
030200 Red/White
010200 Black/White



ERMANO COLLECTION

ERMANO JERSEY 883418

DIADRY

YOUTH
TEAM



DETAILS: 100% DiaDry Polyester.
Ergonomic detailing. Insert crew collar. Embroidered Diadora logos and Italian crest.

SIZES: YS-YM-YL-YXL-S-M-L-XL

AVAILABLE: Immediate

MSRP: JR: \$36.99
SR: \$39.99

COLORS:

- 070200 Forest Green/White
- 020700 White/Forest Green
- 140200 Classic Navy/White
- 021400 White/Classic Navy
- 030200 Red/White
- 020300 White/Red
- 040200 Royal/White
- 020400 White/Royal
- 150200 Gold/White



BACK



ERMANO SHORTS 884418

DIADRY

YOUTH
TEAM



DETAILS: 100% DiaDry Polyester.
Embroidered Diadora logo. 6" inseam (SR), 5" inseam (JR).

SIZES: YS-YM-YL-YXL-S-M-L-XL

AVAILABLE: Immediate

MSRP: JR: \$26.99
SR: \$29.99

COLORS:

- 010200 Black/White
- 070200 Forest Green/White
- 340200 Dark Navy/White
- 140200 Classic Navy/White
- 030200 Red/White
- 040200 Royal/White
- 020201 White/White/Black



PRIMO COLLECTION



PRIMO JERSEY 883120

DETAILS: 100% DiaDry Polyester. Round neck in rib fabric. Contrast binding on front, back and sleeve opening. Side slit with longer back. Embroidered Diadora logos.

COLORS:
 040202 Royal/White/White
 020201 White/White/Black
 140202 Classic Navy/White/White
 030102 Red/Black/White

SIZES: YS-YM-YL-YXL-S-M-L-XL

AVAILABLE: Immediate

MSRP: JR: \$29.99
 SR: \$33.99



ERMANO SHORTS 884418

DETAILS: 100% DiaDry Polyester. Embroidered Diadora logo. 6" inseam (SR), 5" inseam (JR).

COLORS:
 010200 Black/White
 070200 Forest Green/White
 340200 Dark Navy/White
 140200 Classic Navy/White
 030200 Red/White
 040200 Royal/White
 020201 White/White/Black

SIZES: YS, YM, YL, YXL, S, M, L, XL

AVAILABLE: Immediate

MSRP: JR: \$26.99
 SR: \$29.99



DOMINATE COLLECTION

DOMINATE JERSEY 883300

YOUTH **NEW**
TEAM COLOR



BACK

DETAILS: 100% Polyester interlock shiny fabric. V-neck in self fabric. Diadora screened shoulder logos and Diadora embroidered name on chest.

SIZES: YXS-YS-YM-YL-YXL-S-M-L-XL

AVAILABLE: Immediate

MSRP: JR: \$24.99
SR: \$29.99

COLORS:

- 010200 Black/White
- 020100 White/Black
- 030200 Red/White
- 040200 Royal/White
- 340200 Dark Navy/White
- 240200 Sky Blue/White
- 250100 Fl. Yellow/Black
- 060200 Orange/White
- 070200 Forest Green/White
- 170200 Kelly Green/White
- 130200 Maroon/White
- 210200 Gray/White
- 150200 Gold/White
- 430200 Purple/White
- 230100 Pink/Black



DOMINATE SHORT 884300

YOUTH



DETAILS: 100% polyester interlock shiny fabric.

SIZES: YXS-YS-YM-YL-YXL-S-M-L-XL

AVAILABLE: Immediate

MSRP: JR: \$19.99
SR: \$24.99

COLORS:

- 010200 Black/White
- 020100 White/Black



ERMANO WOMEN COLLECTION



ERMANO JERSEY WOMAN 883417

DETAILS: 100% DiADry Polyester.
Ergonomic detailing. Insert crew collar. Embroidered Diadora logos and Italian crest.

SIZES: XXS, XS, S, M, L, XL
(WOMEN'S CUT)

AVAILABLE: Immediate

MSRP: \$39.99

COLORS:

- 030200 Red/White
- 020300 White/Red
- 040200 Royal/White
- 020400 White/Royal

NOTE: See Ermano Men on page 33



ERMANO SHORTS WOMAN 884417

DETAILS: 100% DiADry Polyester.
Embroidered Diadora logo. 6" inseam (SR), 5" inseam (JR).

SIZES: XXS, XS, S, M, L, XL
(WOMEN'S CUT)

AVAILABLE: Immediate

MSRP: \$29.99

COLORS:

- 010200 Black/White



TEAM UNIFORM PACKAGES

GAMMA KIT



Gamma Rete Jersey
Gamma Shorts
Gamma Socks

CONQUER ELITE KIT



Conquer Elite Jersey
Gamma Shorts
Conquer Elite Socks

DOMINATE KIT



Dominate Jersey
Dominate Shorts
Finale Socks

PERSONALIZE YOUR CLUB COLOURS WITH YOUR UNIQUE DESIGN

The Sublimation process enables you to apply your colours, logos and sponsors directly into the fabric



Why sublimation?

- Lighter fabric
- Integrate sponsors into your design
- No design restrictions
- Endless colour options



RELAX TRAINING JERSEY S/S 883400

DIADRY



DETAILS: 100% Diadry Polyester.
V-neck in self fabric.
Diadora screened logo on chest.

COLORS:
020000 White
010000 Black

SIZES: YM-YL-YXL-S-M-L-XL

AVAILABLE: Immediate

MSRP: JR: \$24.99
SR: \$29.99

CONQUER ELITE SOCK 885350



MATERIAL:
• 90% Nylon
• 10% Spandex

COLORS:
010200 Black/White
070200 Forest Green/White

SIZES: S (7-9), M (9-11), L (10-13)

AVAILABLE: Immediate

MSRP: \$15.99

GAMMA SOCK 885020



MATERIAL:
• 90% Nylon
• 10% Spandex

COLORS:
010200 Black/White
020100 White/Black
030200 Red/White
040200 Royal/White
070200 Forest Green/White
140200 Classic Navy/White
340200 Dark Navy/White
340100 Dark Navy/Black

SIZES: S (7-9), M (9-11), L (10-13)

AVAILABLE: Immediate

MSRP: \$13.99

FINALE SOCK 885040



MATERIAL:
• 80% Polyester
• 10% Lycra
• 10% Spandex

COLORS:
010200 Black/White
020100 White/Black
030200 Red/White
020300 White/Red
040200 Royal/White
020400 White/Royal
140200 Navy/White
021400 White/Navy
020700 White/Forest Green

SIZES: XS (5-7), S (7-9),
M (9-11), L (10-13)

AVAILABLE: Immediate

MSRP: XS/S \$7.99
M/L \$8.99



SEAMLESS UNDER-SHIRT L/S 001023

DETAILS: Technical seamless (no stitching) under-shirt for optimal comfort with excellent stretch. Strategic stretch components for optimal comfort. 90% Polyamid / 10% Spandex. Diadora logo on chest.

COLORS:
80013 Black
20002 White
45030 Red
60043 Royal Blue

SIZES: XS/S, M/L, XL/XXL

AVAILABLE: Immediate

MSRP: \$39.99



SEAMLESS UNDER-SHIRT S/S 001019

DETAILS: Technical seamless (no stitching) under-shirt for optimal comfort with excellent stretch. Strategic stretch components for optimal comfort. 90% Polyamid / 10% Spandex. Diadora logo on chest.

COLORS:
80013 Black
20002 White

SIZES: XS/S, M/L, XL/XXL

AVAILABLE: Immediate

MSRP: \$29.99



SEAMLESS TIGHTS 003020

DETAILS: Technical seamless (no stitching) under-short for optimal comfort with excellent stretch. Strategic stretch components for optimal comfort. 90% Polyamid / 10% Spandex.

COLORS:
80013 Black
20002 White

SIZES: XS/S, M/L, XL/XXL

AVAILABLE: Immediate

MSRP: \$24.99



TRAINING VEST 880010

DETAILS: 100% Polyester with Mesh. Binding around arm and bottom. Silk Screen printed Diadora logo.

SIZES: Junior & Senior

AVAILABLE: Immediate

MSRP:
Junior/Senior - \$7.99

COLORS:
010200 Black/White
310100 Silver/Black
030100 Red/Black
040100 Royal/Black



ENZO GK JERSEY 883245



BACK

DETAILS: 100% DiaDry Polyester. Padded elbows and forearms. Partial elastic around sleeve opening for easier wear and extension for gloves.

SIZES: YS-YM-YL-YXL, S-M-L-XL-2XL

AVAILABLE: Immediate

MSRP: JR \$56.99
SR \$59.99

COLORS:

- 060102 Orange/Black/White
- 150102 Gold/Black/White
- 240100 Sky Blue/Black



BLOCK GK JERSEY 883355



BACK

DETAILS: 100% Polyester interlock shiny fabric. V-neck in self fabric. Padded elbows and forearms. Reflective logo on backside. Diadora screened shoulder logos and Diadora embroidered name on chest.

SIZES: YS-YM-YL-YXL-S-M-L-XL

AVAILABLE: Immediate

MSRP: \$49.99

COLORS:

- 170102 Kelly green/Black/White



DIADORA GK APPAREL

PADOVA GK SHORTS 884233



DETAILS: 60% Polyester/40% Cotton. Padded thighs. Embroidered Logo.

SIZES: YS-YM-YL-YXL-S-M-L-XL-XXL

AVAILABLE: Immediate

MSRP: JR \$46.99
SR \$49.99

COLORS:
010200 Black/White



PADOVA GK PANTS 887233



DETAILS: 60% Polyester/40% Cotton. Padded thighs and knees. Removable ankle stirrups. Embroidered Logo.

SIZES: YS-YM-YL-YXL-S-M-L-XL-XXL

AVAILABLE: Immediate

MSRP: JR \$66.99
SR \$69.99

COLORS:
010200 Black/White

GK SAVE1 with finger protection 881605



DETAILS: Palm in 4mm German Latex Foam for superior grip and durability. Removable finger protection on backside. Side in high quality mesh for excellent breathability. Backside molded. Elastic wrist and strap in Velcro in front and back for closure. Flat cut palm. Match quality.

COLORS:
540100 Cyan Blue/Black

SIZES: 6-11

AVAILABLE: Immediate

MSRP: \$79.99

GK ITALIKO 160459



DETAILS: Palm in 3mm Natural Latex Foam for superior grip and durability. Side in high quality mesh for excellent breathability. Backside molded. Elastic wrist and strap in Velcro in front and back for closure. Match/Training quality.

COLORS:
C3444 Black/Gray/Fluorescent Yellow

SIZES: 4-11

AVAILABLE: Immediate

MSRP: \$49.99

GK DD-NA 170938

NEW ITEM



DETAILS: Palm in 3mm Natural Latex Foam for superior grip and durability. Side in high quality mesh for excellent breathability. Backside molded. Elastic wrist and strap in Velcro in front and back for closure. Match/Training quality.

COLORS:
C6211: Fluo Yellow/Fluo Green

SIZES: 4-11

AVAILABLE: August 2016

MSRP: \$34.99

GK EURO 158860



DETAILS: Palm in 3mm Latex Foam. Backside molded. Elastic wrist and strap in Velcro in front and back for closure. Training quality.

SIZES: 4-11

AVAILABLE: Immediate

MSRP: \$29.99

COLORS:
473402 Fluorescent Green/Navy/White
C4686 Fluo Yellow/Green
Glade/ Black

CONQUER ELITE JACKET 886350



DETAILS: 100% Polyester Tricot. Full zipper with 2 front zipper pockets. Waist band draw cord. Embroidered Diadora logo.

SIZES: YS-YM-YL-YXL-S-M-L-XL-XXL

AVAILABLE: Immediate

MSRP: JR \$65.99
SR \$69.99

COLORS:

- 010102 Black/Black/White
- 030102 Red/Black/White
- 040102 Royal/Black/White
- 343402 Dark Navy/Dark Navy/White



CONQUER ELITE TRAINING PANTS 887350



DETAILS: 100% Polyester Tricot. Bottom back long zipper with elastic calves for easy pant removal. 2 front pockets. Elastic waistband with draw cord. Embroidered Diadora logo.

SIZES: YS-YM-YL-YXL-S-M-L-XL-XXL

AVAILABLE: Immediate

MSRP: JR \$55.99
SR \$59.99

COLORS:

- 010102 Black/Black/White
- 343402 Dark Navy/Dark Navy/White



ERMANO JACKET 886418



DETAILS: 100% Polyester Tricot. Full zipper. Waist band draw cord. Embroidered Diadora logo and Italian crest.

SIZES: YM, YL, YXL, S, M, L, XL, XXL

AVAILABLE: Immediate

MSRP: JR \$68.99

SR \$74.99

COLORS:

070200 Forest Green/White

010200 Black/White

140200 Classic Navy/White

030200 Red/White

040200 Royal/White



ERMANO PANTS 887418



DETAILS: 100% Polyester Tricot. Bottom back long zipper for easy footwear removal. 2 front pocket. Embroidered Diadora logo. Pants Available in YS.

SIZES: YS, YM, YL, YXL, S, M, L, XL, XXL

AVAILABLE: Immediate

MSRP: JR \$57.99

SR \$61.99

COLORS:

010200 Black/White

140200 Classic Navy/White



PRIMO JACKET 886120



DETAILS: 100% Polyester Dobby with Mesh Lining. Full zipper. Waist band with draw cord. 2 front pockets. Embroidered Diadora logos.

SIZES: YS, YM, YL, YXL, S, M, L, XL, XXL

AVAILABLE: Immediate

MSRP: JR \$54.99

SR \$59.99

COLORS:

010102 Black/Black/White

010302 Black/Red/White

010402 Black/Royal/White

013402 Black/Dark Navy/White



PRIMO PANTS 887120



DETAILS: 100% Polyester Dobby with Mesh Lining. 2 side pockets. Bottom of pants with zipper for closure. Embroidered Diadora logos.

Sizes: YS, YM, YL, YXL, S, M, L,

XL, XXL

AVAILABLE: Immediate

MSRP: JR \$49.99

SR \$54.99

COLORS:

010202 Black/White/White



CONQUER ELITE HOODIE 886352



DETAILS: 60% Cotton + 40% Polyester with fleece sweatshirt with hood. Cuff sleeve finish and waistband. Soft fabric with fleece inside. Embroidered Diadora logo.

SIZES: YS-YM-YL-YXL-S-M-L-XL-XXL

AVAILABLE: Immediate

MSRP: \$49.99

COLORS:

010102 Black/Black/White



BACK

CONQUER ELITE POLO 883352

DIADRY



DETAILS: 100% Polyester DiADry. Self fabric collar with 3 button closure. Side vents for more comfort fit. Diadora screened shoulder logos and Diadora embroidered name on chest.

COLORS:

010200 Black/White
030200 Red/White
040200 Royal/White
340200 Dark Navy/White
020231 White/White/Silver Logo

SIZES: S-M-L-XL-2XL-3XL

AVAILABLE: Immediate

MSRP: \$39.99



DIADORA APPAREL

MILANO POLO 883419

UNTIL
QUANTITIES
LAST

DETAILS: 100% polyester with DiADry. Sleeve tipping and engineered piecing. Embroidered Diadora logo and Italian crest.

SIZES: S-M-L-XL-XXL

AVAILABLE: Immediate

MSRP: \$39.99

COLORS:

010200 Black/White



MILANO SHORTS 884419

UNTIL
QUANTITIES
LAST

DIADRY

DETAILS: 100% Polyester with DiADry. 2 Front pocket and 2 back pockets. Very light and comfortable. Embroidered Diadora logo. 7" inseam.

SIZES: YXL-S-M-L-XL-XXL

AVAILABLE: Immediate

MSRP: \$39.99

COLORS:

010200 Black/White





COPPA RAIN JACKET 886450

DETAILS: 100% Polyester with waterproof coating. Hidden front pockets with zippers. Hidden front full zipper. Under arm hole and backside vents for breathing. Velcro strap & elastic on cuff for adjusting fit. Waistband draw cord for adjusting waist fit. Backside with drop tail back for sitting on wet surfaces. Hood concealed in back for more comfort. Inner lining completely in mesh. Partially sealed seams. Embroidered Diadora Logo.

SIZES: YS-YM-YL-YXL-S-M-L-XL-XXL

AVAILABLE: Immediate

MSRP: JR \$76.99
SR \$79.99

COLORS:
010200 Black/White



COPPA RAIN PANTS 887450



DETAILS: 100% Polyester with waterproof coating. Sealed seams. Hidden front pockets with zippers. Bottom side zipper. Embroidered Diadora logo.

SIZES: YS-YM-YL-YXL-S-M-L-XL-XXL

AVAILABLE: Immediate

MSRP: JR \$56.99
SR \$59.99

COLORS:
010200 Black/White



MODA WINTER JACKET 886620

DETAILS: 100% Nylon. Padded hat/hood. Front pockets with zippers. 100% nylon with thick padded filling. Hood attachment to keep warm. Front pockets with zippers. Inside pocket with closure. Sleeve cuffs. Diadora embroidered logo on chest and sleeve.

SIZES: XS-S-M-L-XL-XXL

AVAILABLE: August 2016

MSRP: \$149.99

COLORS:
010200 Black/White



PETERSBERG BOMBER JACKET 006007



DETAILS: 100% Polyester Woven slightly coated with ultra light Polyester fill. 2 front zippered side pockets. Diadora logo embroidered front and printed shoulders.

SIZES: XXS-XS-S-M-L-XL-XXL

AVAILABLE: Immediate

MSRP: \$79.99

COLORS:
80013 Black/White



STOCKHOLM WINTER HAT 007803



DETAILS: Acrylic winter hat. Diadora logo embroidered.

COLORS:
60063 Navy/White
80013 Black/White

SIZES: One Size

AVAILABLE: Immediate

MSRP: \$13.99

HELSINKI CAP 1277801



DETAILS: 100% Polyester Interlock. 135 g/m²

COLORS:
80013 Black/White

SIZES: One Size

AVAILABLE: Immediate

MSRP: \$19.99

BACK VIEW

PLAYER WINTER GLOVE 1288001



DETAILS: 100% Knitted Acrylic. Embroidered Diadora Logo

COLORS:
80013 Black/White

SIZES: One Size Adult

AVAILABLE: Immediate

MSRP: \$17.99

BERGEN NECK WARMER 1277805



DETAILS: 100% polyester polar fleece. 240 g/m²

COLORS:
80013 Black/White

SIZES: One Size

AVAILABLE: Immediate

MSRP: \$17.99

NEUTRAL II REFEREE JERSEY 883410



DETAILS: 100% Polyester fabric. Hidden front short zipper on neck for comfort. 2 chest pockets with Velcro closure. Strategically placed mesh on back. Embroidered Diadora logo.

COLORS:
060100 Orange/Black

SIZES: XS-XXL

AVAILABLE: Immediate

MSRP: \$64.99



BACK

NEUTRAL REFEREE JERSEY 154410



DETAILS: 100% Polyester wicking. Hidden front short zipper. 2 front hidden pockets on chest. Strategically placed mesh under arms and on complete upper back. Embroidered Diadora logo

COLORS:
80013 Black/Gold

SIZES: S-XXL

AVAILABLE: Immediate

MSRP: \$64.99



BACK

MILANO SHORTS 884419



DIADRY

DETAILS: 100% Polyester with DiaDry. 2 Front pocket and 2 back pockets. Very light and comfortable. Embroidered Diadora logo. 7" inseam.

COLORS:
010200 Black/White

SIZES: YXL-S-M-L-XL-XXL

AVAILABLE: Immediate

MSRP: \$39.99

DIADORA



DIADORA TERMS AND CONDITIONS

Submission of an order for goods to Logica Sport (Diadora Canada) is regarded as an acceptance of the terms and conditions of Logica Sport as outlined below. There will be absolutely no resale of footwear, apparel or accessories purchased from Logica Sport without express written authorization.

TERMS OF SALE

Terms of sale are subject to change on 30 days written notification.

PRICING POLICY

Prices are subject to change without notice. Prices will be invoiced as stated on the order which has been accepted by Logica Sport

GST

The wholesale pricing and suggested retail pricing in the catalogue are net of Goods and Service Tax. The GST at the prevailing rate will be added to the bottom of the invoice as a charge for the total value of the invoice including freight/postage where applicable.

PAYMENT TERMS

All invoices are due for payment within 30 days of the invoice date unless otherwise agreed upon in writing.

CREDIT APPROVAL

All orders are subject to acceptance and approval prior to shipment. Customers shall be liable to pay all service charges and any collection costs incurred by Logica Sport to collect amounts due.

SERVICE CHARGES

A service charge of 1.5% per month (18% per annum) will be applied to account balance past due.

SHIPPING POLICY

Logica Sport will attempt to ship all orders on requested shipping dates, however, should situations result in delay or non-delivery, Logica Sport will not be held liable.

FREIGHT POLICY

All regular and booking orders will be shipped F.O.B. Logica distribution centre, buyer's risk in transit and will be shipped via means determined by Logica unless otherwise specified by the customer.

BACK ORDERS

All backorders over 60 days will be returned to Logica's representative to be revised with the customer.

SHORTAGES AND OTHER IRREGULARITIES

A notation of outer carton damage and/or removal/replacement of the tamper-proof tape must be made on the signed pro bill at the time of delivery and reported to the carrier and Logica in writing within 5 days of the received date. Any shortage of irregularity or dissatisfaction regarding the quantity shipped, discounts or conditions of sale must be reported to Logica office within 10 days of receipt. Failure to do so will constitute complete customer acceptance of the order as shipped and invoiced.

SECONDS OR REJECTS

Any item purchased as a second or reject does not carry any warranty for workmanship and materials and is sold as is. Concerning such items, none of the trademarks may be used in any advertising or promotional publicity.

PROCEDURES AND CONDITIONS TO RETURN GOODS

1. Contact a Customer Service Representative at Logica's Customer Service Centre - Toll free: 877-756-4422
2. The Customer Service Representative will discuss the situation with the customer and provide a return authorization number (RMA) to authorize returns.
3. All goods authorized for return must be shipped back to the Logica warehouse freight PREPAID to the destination.
4. Write the Return Authorization number on the outside of all cartons/packages returned.
5. Merchandise for return must be in original packaging, free of all price tickers and in resalable condition.
6. Non-resalable merchandise may not be returned to Logica unless defective.
7. Discontinued merchandise may not be returned.
8. Merchandise returned will be subject to a 25% restocking charge if tickets, price tags or other markings are on product.
9. Merchandise returned in excess of that authorized by Customer Service, will remain at the risk of the Customer, and will be returned to the Customer, freight collect.

CONSUMER WARRANTY AND DEALER REPLACEMENT POLICY

Logica products are warranted only to direct commercial customers against manufacturing defects in workmanship and material under normal use and maintenance. Logica reserves the right to inspect products alleged to be defective for evidence of misuse or abuse and determine whether in Logica sole determination a repair or replacement, if any, of the defective product is due. The liability of Logica's under this warranty shall be limited to repair or replacement. In no event shall Logica be liable for special incidental or consequential damages whatsoever. Seller has made no other representations or warranties, expressed or implied, as to any matter whatsoever, and there are no implied warranties of merchantability or fitness for a particular purpose.

RETAIL PRICES

All retail prices set forth in this catalogue are suggested prices.

DIVERSION OF MERCHANDISE

To enhance informed selection and promote product image, Logica only sells to selected retail outlets which may not resell to any person or entity who is not also the final user or consumer. The resale trans-shipment or any form of diversion of Logica product to anyone other than the final consumer is expressly prohibited. Such activity may subject the violator to termination of relationship with Logica and constitutes a breach of the contract of sale for which Logica may seek the appropriate legal remedies, including monetary damages or injunctive relief. Under such circumstances Logica also reserves the right to cancel orders previously accepted and to require the return, at such re-seller's expense, of any diverted merchandise.

SELLING OF PRODUCT

Retailer is authorized to sell Logica products from its established, permanent retail outlet(s) only. The sale of Logica products through the mail, by catalogue, by temporary or transient retail locations, through any electronic means (including the internet and/or on-line) or by any means other than an established, permanent retail outlet, must be pre-authorized in writing by Logica Sport.

ADVERTISING

All use of Logica trademarks and images must be submitted to Logica for final approval.

CONDITIONS DE VENTE

Les conditions de vente peuvent être modifiées sur avis écrit de 30 jours.

TARIFICATION

Les prix peuvent changer sans préavis, et toute la marchandise expédiée sera facturée au prix en vigueur à la date d'expédition.

TPS

Les prix de gros et les prix détail suggérés dans ce catalogue n'incluent pas la taxe sur les produits et services (TPS). La TPS (au taux en vigueur) sera ajoutée au bas de la facture et appliquée sur le montant total de la facture incluant les frais de transport/poste s'il y a lieu.

MODALITÉS DE PAIEMENT

Toutes les factures doivent être réglées dans les 30 jours suivant la date de facturation à moins d'avis contraire par écrit.

AUTORISATION DE CRÉDIT

Toutes les commandes doivent être approuvées avant d'être expédiées. Les clients devront payer tous les frais de gestion et tous les frais de recouvrement engagés par Logica pour récupérer un solde en souffrance.

FRAIS DE GESTION

Des frais de gestion de 1,5 % par mois (18 % par année) seront portés aux comptes en souffrance.

EXPÉDITION

Logica mettra tout en œuvre pour respecter les dates de livraison demandées, toutefois, en cas de retard ou de non-livraison, Logica ne sera pas tenu responsable.

TRANSPORT

Les commandes régulières et les commandes sur réservation seront expédiées F.A.B. du centre de distribution de Logica, aux risques de l'acheteur pendant le transit, par des moyens déterminés par Logica à moins d'avis contraire par le client.

COMMANDES EN ATTENTE

Les commandes en attente depuis plus de 60 jours sont automatiquement retournées au représentant de Logica pour qu'il les passent en revue avec le client.

LIVRAISON INCOMPLETE ET AUTRES IRRÉGULARITÉS

Une notification de tout dommage aux boîtes et/ou ruban protecteur au moment de la livraison doit être inscrite sur la facture. Un avis écrit doit être envoyé à Logica et au transporteur dans les 5 jours suivants la livraison. Le client sera responsable d'avoir accepté intégralement la commande telle qu'elle a été expédiée et facturé à moins qu'il n'avisé par écrit au bureau de Logica de tout produit manquant, irrégularité ou autre motif d'insatisfaction relativement aux quantités expédiées, aux conditions de vente dans les 10 jours suivant la livraison.

ARTICLES DE SECOND CHOIX OU DE REBUT

Tout produit acheté à titre de second choix ou de rebut ne comporte aucune garantie de fabrication ni de matériel et est vendu tel quel. Pour ce qui est de ces articles, aucune des marques déposées de Logica ne peut être utilisée dans aucune publicité ou offre promotionnelle sur ces articles.

RETOUR DE MARCHANDISES : MARCHÉ À SUIVRE ET CONDITIONS

- 1- Communiquer avec le centre de service à la clientèle - sans frais: 877-756-4422
- 2- Le représentant évaluera avec le client la situation et vous donnera un numéro d'autorisation de retour.
- 3- Tous les articles dont le retour a été autorisé doivent être expédiés port payé à l'entrepôt de Logica.
- 4- Écrire le numéro d'autorisation de retour à l'extérieur de toutes les boîtes ou paquets à l'entrepôt de Logica.
- 5- Les articles doivent être retournés dans leur emballage original, sans étiquette de prix et condition de revente.
- 6- Les marchandises non vendables ne peuvent pas être retournées à Logica à moins que la marchandise ne soit défectueuse.
- 7- Les articles de fin de série ne peuvent pas être retournés.
- 8- La marchandise retournée sera sujette à une charge de 25% si les étiquettes ou autres éléments ne sont pas attachées aux produits.
- 9- La marchandise retournée en nombre supérieur à celui alloué par le service aux consommateurs sera la responsabilité du client et sera retournée au client C.O.D.

GARANTIE DU CONSOMMATEUR ET POLITIQUE DE REMPLACEMENT AU DÉTAILLANT

Les produits Logica sont garantis uniquement aux clients commerciaux directs contre tous défauts de fabrication ou de matières premières dans les conditions normales d'utilisation et d'entretien. Logica se réserve le droit d'inspecter les produits défectueux pour déceler toute trace d'abus ou de mauvais usage et de déterminer de sa propre autorité si des réparations ou un remplacement s'imposent. Cette garantie limite la responsabilité légale de Logica à la réparation ou au remplacement. En aucun cas, Logica ne sera tenu responsable de dommages indirects ou secondaires particuliers, quels qu'ils soient. Le représentant n'a fait aucune autre représentation ou garantie, expresse ou tacite, concernant quoi que ce soit, et il n'y a aucune garantie implicite de qualité loyale et marchande ou d'ajustement dans un but particulier.

PRIX DU DÉTAIL

Les prix de détail indiqués dans ce catalogue sont des prix suggérés.

DÉTOURNEMENT DE LA MARCHANDISE

Pour rehausser une sélection informée et promouvoir l'image des produits, Logica vend à des magasins sélectionnés à la condition expresse que ces magasins ne revendent pas à d'autres personnes ou personnes morales qui ne sont pas l'utilisateur ou le consommateur final. La revente, le transfert ou toute autre forme de détournement de produit Logica à toute personne autre que le consommateur final est interdite. De telles activités peuvent entraîner la résiliation du contrat du contrevenant et constituer une rupture de contrat de vente pour laquelle Logica pourrait prendre des mesures légales appropriées, notamment des dommages-intérêts ou une injonction. Dans ces circonstances, Logica se réserve aussi le droit d'annuler les commandes préalablement acceptées et d'exiger le retour, aux frais du revendeur, de toutes marchandises détournées.

VENTE DE PRODUITS

Le détaillant n'a l'autorisation de vendre les produits de Logica que depuis son (ses) magasin (s) permanent de vente au détail. La vente de produits Logica par l'entremise de la poste, d'un catalogue, par location de vente au détail en transit temporaire, de moyens électroniques (y compris par l'internet et/ou en ligne) ou de tout moyen autre qu'un magasin au détail doit être autorisée d'avance par écrit par Logica Sport.

PUBLICITÉ

Tout usage de marque commerciale et des images de Logica doivent être approuvés par Logica.

Issey Nakajima Farran



Daniele Meucci



Lucas Lacko



Italian Beach Volley Federation



Ducati Racing Team

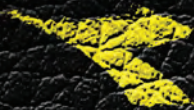


Movistar Cycling Team



Associazione Italiana Arbitri





DIADORA



DIADORA

12060 Albert-Hudon
Montréal-Nord, Québec H1G 3K7
Phone: 1.877.756.4422
Fax: 514.387.1534
diadora@logica.ca
www.Diadora.com

Distributed by

LogicaSport