



# DIADORA



***RUNNING***  
***SPRING 2017***

# INDEX

<b>FOOTWEAR CHART</b>	<b>3</b>	<b>RUNNING WOMAN</b>	
<b>NET BREATHING SYSTEM</b>	<b>4</b>	<b>TECHNICAL RUNNING</b>	<b>12</b>
<b>TECHNOLOGIES</b>	<b>5</b>	<b>LIGHT RUNNING</b>	<b>15</b>
<b>RUNNING MAN</b>		<b>RUNNING JUNIOR &amp; INFANT</b>	<b>18</b>
<b>TECHNICAL RUNNING</b>	<b>6</b>	<b>SIZE CHART</b>	<b>22</b>
<b>LIGHT RUNNING</b>	<b>10</b>	<b>TERMS &amp; CONDITIONS</b>	<b>23</b>



# SPRING 2017 RUNNING COLLECTION

## MAN

### TECHNICAL RUNNING



N-4100-2 BRIGHT  
MSRP: \$189.99



MYTHOS SHINDANO PLUS ST  
MSRP: \$149.99



MYTHOS SHINDANO III  
MSRP: \$139.99



KURUKA  
MSRP: \$139.99



RUN-505  
MSRP: \$119.99



NJ-404-2  
MSRP: \$119.99



NJ-404-2  
MSRP: \$119.99



SWAN 2  
MSRP: \$99.99



SWAN 2  
MSRP: \$99.99



HAWK 7  
MSRP: \$79.99



HAWK 7  
MSRP: \$79.99



HAWK 5  
MSRP: \$69.99



HAWK 5  
MSRP: \$69.99



SHAPE 7  
MSRP: \$69.99



SHAPE 7  
MSRP: \$69.99

### LIGHT RUNNING



N-4100-2 BRIGHT W  
MSRP: \$189.99



KURUKA W  
MSRP: \$139.99



MYTHOS SHINDANO III W  
MSRP: \$139.99



RUN-505 W  
MSRP: \$119.99



NJ-404-2 W  
MSRP: \$119.99



NJ-404-2 W  
MSRP: \$119.99

### TECHNICAL RUNNING



NJ-303-2 W  
MSRP: \$99.99



SWAN 2 W  
MSRP: \$99.99



SWAN 2 W  
MSRP: \$99.99



HAWK 7 W  
MSRP: \$79.99



HAWK 7 W  
MSRP: \$79.99



HAWK 5  
MSRP: \$69.99



HAWK 4  
MSRP: \$69.99

### LIGHT RUNNING



NJ-303-1 RS JR  
MSRP: \$79.99



HAWK 7 JR  
MSRP: \$69.99



HAWK 7 JR  
MSRP: \$69.99



HAWK 6 JR  
MSRP: \$69.99



HAWK 6 JR  
MSRP: \$69.99



JAZZY 5 V JR  
MSRP: \$59.99



JAZZY 4 V JR  
MSRP: \$59.99



JAZZY 4 V JR  
MSRP: \$59.99



JAZZY 4 V JR  
MSRP: \$59.99



JAZZY 4 V JR  
MSRP: \$59.99



SHAPE 7 V JR  
MSRP: \$59.99



SHAPE 5 V JR  
MSRP: \$59.99



SHAPE 5 V JR  
MSRP: \$59.99



SHAPE 7 JR  
MSRP: \$54.99



SHAPE 5 JR  
MSRP: \$54.99



SHAPE 5 JR  
MSRP: \$54.99



JAZZY 4 V I  
MSRP: \$39.99



JAZZY 4 V I  
MSRP: \$39.99

## WOMAN

## JUNIOR - INFANT

# NET BREATHING SYSTEM™ - Geox licensed technology

## NET BREATHING SYSTEM™

**NET  
BREATHING  
SYSTEM™**

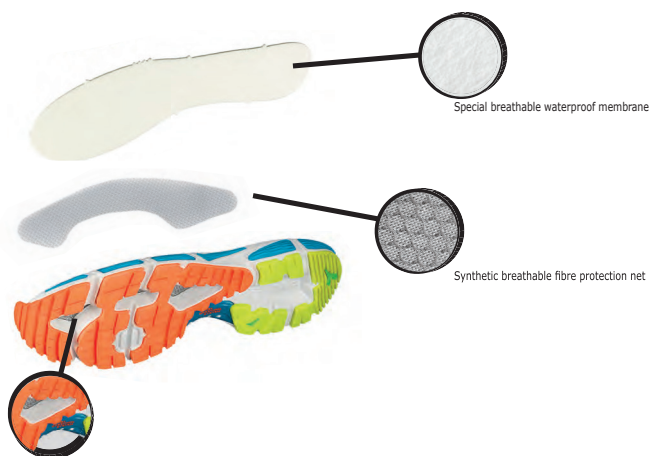
Geox licensed technology

The innovative and exclusive NET Breathing System™ lets feet breathe. Improves performance by increasing concentration, endurance and precision.

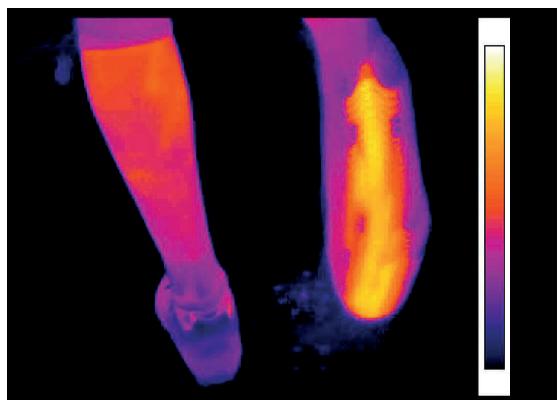
### THE PATENT: NET Breathing System™

The synthetic fibre net and the special breathable, waterproof membrane of the sole improve breathability while keeping moisture, mud and debris out of the shoe and feet dry.

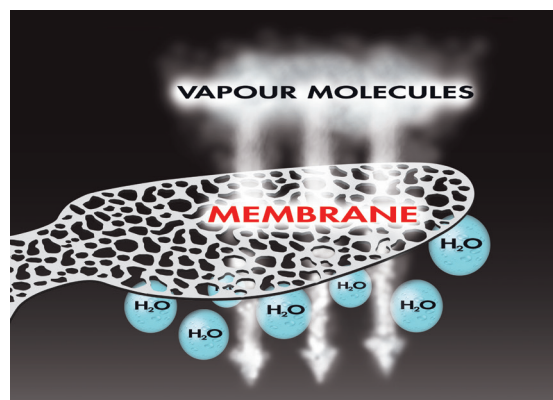
### THE PATENT



## THE BENEFITS



Computerised thermal imaging shows that the NET Breathing System™ minimizes the barrier to foot breathability, expelling excess heat through most of the sole surface.



The breathable waterproof membrane improves sole breathability, while keeping moisture out of the shoe.



# TECHNOLOGIES

## NET BREATHING SYSTEM



The sole's surface is made of a synthetic fibre mesh and special breathable and waterproof membrane. NET Breathing System™ increases the sole's transpiration capacity, preventing moisture, mud and other external elements from entering the shoe, and thus keeping the foot dry.

## AXELER



**AXELER:** the super light Axeler technology is composed of a frame of Tech Alloy (a special alloy of harmonic steel) which increases the propulsive capacity of the mid-sole. Axeler has been engineered to insure a high stability of the foot together with an exceptional bending capacity and a perfect weight distribution so to accompany and follow the foot in its every movement. The integration of Axeler with CCB improves support to the foot arch and to the torsion control.

## AXELER PROPULSION



**AXELER PROPULSION:** is made of Pebax, a material with elevated elastic memory that maintains its characteristics over time. The chevron shape of the Pebax element guarantees maximum propulsive energy during the thrust phase, which is generated by the compression upon impact with the ground. Each individual propulsor is built from single elements in order to ensure maximum comfort and flexibility, either longitudinal or transverse.

## MICROBE BARRIER



**MICROBE BARRIER**

**MICROBE BARRIER:** special anti-bacteria treatment applied to the internal shoe fabric. The bactericide treatment remains even after several washes.

## DA-DA<sup>2</sup>



**DA-DA<sup>2</sup>:** Diadora exclusive shock-absorbing system comprising two elastomers with a different density situated in the heel and metatarsal area. Conceived to guarantee the maximum impact absorption, eliminating negative vibrations in the heel area, and to enhance flexibility and distribution of pressures in the forefoot area.

## FLEXOFT



**FLEXOFT:** a particular rubber and foam compound developed to guarantee lightweight, flexibility, shock absorption and better propulsion in the forefoot area.

## DURATECH 5000

**DURATECH 5000**

**DURATECH 5000:** special wear-resistant rubber compound assuring a far higher wear resistance than standard rubber, offering an effective solution to shoe heel wear.

## CCB



**CCB:** medial stabilizer created to control torsional stability of the area of the arch support, giving the shoe lightness and stability without altering shock absorption.

## ELASTON

**ELASTON**

**ELASTON:** exclusive blend used to make midsoles and insoles, based on the use of special compound which gives the product high elasticity while maintaining its characteristics for a long time. The capacity of maximum return to the original form after the load phase improves the general comfort of the product and the absorption of impact on the ground.

# 170502 N-4100-2 BRIGHT

CUSHIONING/MAN

weight 330g

Sizes 6 / 7-12 / 13

NET BREATHING SYSTEM™

MICROBE BARRIER

DA<sup>2</sup>

CCB

FLEXOFT BLOWN RUBBER

DURATECH 5000

NET BREATHING SYSTEM™  
Geox licensed technology

MSRP: \$189.99



6

**UPPER:** Nylon air mesh and Supreltech. Lasting board in Elastom E.V. A. Lining with special anti-bacteria treatment. 3M

**INSOLE:** Removable anatomical bi-density in mesh water repellent and breathable and shock-absorbing Elastom E.V.A. and PU foam antishock perforated and breathable.

**MEMBRANE:** Special breathable waterproof membrane.

**PROTECTION NET:** In synthetic fibre jointed to the midsole.

**MIDSOLE:** Moulded Elastom E.V.A. foam. Double Action<sup>2</sup> in the heel area.

**OUTSOLE:** Blown Flexoft Rubber in the front area. Special Duratech 5000 wearproof compound in the heel area.



C3612

silver dd/fluo yellow



# 170107 MYTHOS SHINDANO PLUS ST

STABILITY/MAN

weight 305g

Sizes 7-12 / 13



MSRP: \$149.99

**UPPER:** Nylon air mesh and Supreltech. Lining with special anti-bacteria treatment.

**INSOLE:** Removable anatomical shock-absorbing Elastom E.V.A. foam.

**MIDSOLE:** Moulded bidensity Elastom E.V.A. foam (D.O.S system). Double Action<sup>2</sup> in the heel area. C.C.B. Axeler in titanium.

**OUTSOLE:** Blown Flexoft Rubber in the front area. Special Duratech 5000 wearproof compound in the heel area.



**C3189**  
royal/orange



# 160499 MYTHOS SHINDANO III

CUSHIONING/MAN

weight 310g

Sizes 6 / 7-12 / 13



MSRP: \$139.99

**UPPER:** Nylon air mesh and Supreltech. Lasting board in PU foam. Lining with special anti-bacteria treatment.

**INSOLE:** Removable anatomical shock-absorbing Elastom E.V.A. foam.

**MIDSOLE:** Moulded Elastom E.V.A. foam. Double Action<sup>2</sup> in the heel area. C.C.B.. Axeler in titanium.

**OUTSOLE:** Blown Flexoft Rubber in the front area. Special Duratech 5000 wearproof compound in the heel area.



**C5214**  
fluo yellow/sky diva blue



# 170789 KURUKA PLUS ST

LIGHTWEIGHT CUSHIONING/MAN

weight 300g

Sizes 6-14



DURATECH 5000

NEW  
ITEM



MSRP: \$139.99

**UPPER:** Two-tone engineered nylon air mesh. Mounting insole in Elaston E.V.A. Lining with special antibacteria treatment.

**INSOLE:** Removable anatomical shock-absorbing PU foam insole.

**MIDSOLE:** Moulded Elaston E.V.A. foam. Double Action<sup>2</sup> in the heel area.

**OUTSOLE:** Special Duratech 5000 wearproof compound.



C6027

black/blue fluo



8

# 171451 RUN-505

LIGHTWEIGHT/MAN

weight 270g

Sizes 6H-12H

NEW  
ITEM



MSRP: \$119.99

**UPPER:** Air mesh nylon. Elaston E.V.A. footbed.

**INSOLE:** Removable anatomical shock-absorbing Elaston E.V.A.

**MIDSOLE:** Moulded Elaston E.V.A. foam.

**OUTSOLE:** Anti-abrasion rubber.



C6240

gray/royal



# 160510 NJ-404-2

CUSHIONING/MAN

Sizes 8-12

**NET  
BREATHING  
SYSTEM™**



MSRP: \$119.99

**UPPER:** Nylon mesh and suprell soft.

**INSOLE:** Removable anatomical in mesh water repellent and breathable. Elastom E.V.A foam perforated and breathable.

**MIDSOLE:** Injected Elastom E.V.A foam. Special breathable waterproof membrane. Protection NET in synthetic fibre jointed to the midsole.

**OUTSOLE:** Hi-density rubber.



**C4034**  
black/green



**C4591**  
gray/royal



# 171445 SWAN 2

MAN

Sizes 6H-12H

**NEW**  
ITEM

MSRP: \$99.99

**UPPER:** Engineered Air mesh nylon.

**INSOLE:** DD Comfort. Removable.

**MIDSOLE:** Single-density moulded E.V.A. foam.

**OUTSOLE:** TPR.



**C5188**

black/optical white/lime punch



**C3362**

gray/black



10

# 171455 HAWK 7

MAN

Sizes 6H-12H

**NEW**  
ITEM

MSRP: \$79.99

**UPPER:** Nylon mesh and Suprellsoft.

**INSOLE:** Cotton jersey and shock-absorbing E.V.A. foam.

**MIDSOLE:** Single-density moulded E.V.A. foam.

**OUTSOLE:** Anti-abrasion rubber.



**C6445**

vermillion orange/steel gray



**C2475**

gray/black coal/red



# 170102 HAWK 5

UNISEX



MSRP: \$69.99

**UPPER:** Nylon mesh and Suprellsoft.

**INSOLE:** Cotton jersey and shock-absorbing E.V.A. foam.

**MIDSOLE:** Single-density moulded E.V.A. foam.

**OUTSOLE:** TPR.



**SIZES:**  
6H-12H

**C2418**  
gray/orange



**SIZES:**  
6H-12

**C5352**  
red/eyes blue



# 171459 SHAPE 7

UNISEX

11

**NEW**  
ITEM



MSRP: \$69.99

**UPPER:** Nylon mesh and Suprellsoft.

**INSOLE:** Cotton jersey and shock-absorbing E.V.A. foam.

**MIDSOLE:** Injected E.V.A. foam. C.C.B.

**OUTSOLE:** TPR.



**SIZES:**  
4-12H

**C0200**  
black/black



**SIZES:**  
6H-12H

**C5888**  
ice gray/white



# 170503 N-4100-2 BRIGHT W

CUSHIONING/WOMAN

weight 280g

Sizes 5H-10 (woman)

NET BREATHING SYSTEM™

MICROBE BARRIER

DA

CCB

FLEXOFT BLOWN RUBBER

DURATECH 5000

Woman Last

MSRP: \$189.99



C3916

silver dd/shocking pink

**UPPER:** Nylon air mesh and Supreltech. Lasting board in Elastom E.V.A. Lining with special anti-bacteria treatment.

**INSOLE:** Removable anatomical bi-density in mesh water repellent and breathable and shock-absorbing Elastom E.V.A. and PU foam antishock perforated and breathable.

**MEMBRANE:** Special breathable waterproof membrane.

**PROTECTION NET:** In synthetic fibre jointed to the midsole.

**MIDSOLE:** Moulded Elastom E.V.A. foam. Double Action<sup>2</sup> in the heel area. C.C.B.

**OUTSOLE:** Blown Flexoft Rubber in the front area. Special Duratech 5000 wearproof compound in the heel area.

**PLUS:** Projected on woman last.



# 170793 KURUKA W PLUS ST

**LIGHTWEIGHT CUSHIONING/WOMAN**

weight 260g

Sizes 4-9H (woman)



DURATECH 5000

Woman Last

**NEW ITEM**

MSRP: \$139.99



**C6524**

deep ultramarine/fluo yellow dd/black

**UPPER:** Two-tone engineered nylon air mesh. Mounting insole in Elaston E.V.A. Lining with special antibacteria treatment.

**INSOLE:** Removable anatomical shock-absorbing PU foam insole.

**MIDSOLE:** Moulded Elaston E.V.A. foam. Double Action<sup>2</sup> in the heel area.

**OUTSOLE:** Special Duratech 5000 wearproof compound.

**PLUS:** Projected on woman last.



13

# 160503 MYTHOS SHINDANO III W

**CUSHIONING/WOMAN**

weight 270g

Sizes 5H-10 (woman)



CCB

FLEXOFT BLOWN RUBBER

DURATECH 5000

Woman Last



MSRP: \$139.99



**C0820**

orchid/white

**UPPER:** Nylon air mesh and Supreltech. Lasting board in PU foam. Lining with special anti-bacteria treatment.

**INSOLE:** Removable anatomical shock-absorbing Elastom E.V.A. foam.

**MIDSOLE:** Moulded Elastom E.V.A. foam. Double Action<sup>2</sup> in the heel area. C.C.B.. Axeler in titanium.

**OUTSOLE:** Blown Flexoft Rubber in the front area. Special Duratech 5000 wearproof compound in the heel area.

**PLUS:** Projected on woman last.



# 171452 RUN-505 W

LIGHTWEIGHT/WOMAN

weight 215g

Sizes 4-8H (woman)

Woman Last

NEW ITEM

MSRP: \$119.99

**UPPER:** Engineered Air mesh nylon. Elaston E.V.A. footbed.

**INSOLE:** Removable anatomical shock-absorbing Elaston E.V.A.

**MIDSOLE:** Moulded Elaston E.V.A. foam.

**OUTSOLE:** Anti-abrasion rubber.

**PLUS:** Projected on woman last.



C6223

frost gray/nine iron



14

# 160512 NJ-404-2 W

CUSHIONING/WOMAN

Sizes 5H-8H / 9H (woman)

NET BREATHING SYSTEM™

Woman Last

MSRP: \$119.99

**UPPER:** Nylon mesh and Suprellsoft.

**INSOLE:** Removable anatomical in mesh water repellent and breathable. Elastom E.V.A foam perforated and breathable.

**MIDSOLE:** Injected Elaston E.V.A foam. Special breathable waterproof membrane. Protection NET in synthetic fibre jointed to the midsole.

**OUTSOLE:** Hi-density rubber.

**PLUS:** Projected on woman last.



C4573

violet misty/violet crocus/white



C4662

black/fluo pink



# 170094 NJ-303-2 W

CUSHIONING/WOMAN

weight 185g

Sizes 5H-10 (woman)

NET  
BREATHING  
SYSTEM™

Woman  
Last



MSRP: \$99.99

**UPPER:** Nylon mesh and Suprellsoft.

**INSOLE:** Removable anatomical in mesh water repellent and breathable. Elastom E.V.A foam perforated and breathable.

**MIDSOLE:** Injected Elastom E.V.A foam. Special breathable waterproof membrane. Protection NET in synthetic fibre jointed to the midsole.

**PLUS:** Projected on woman last.



**C6051**

violet ultra-vio/dewberry



# 171446 SWAN 2 W

WOMAN

Sizes 4-8H (woman)

Woman Last

NEW ITEM

MSRP: \$99.99

**UPPER:** Nylon mesh and Suprellsoft.

**INSOLE:** DD Comfort. Removable.

**MIDSOLE:** Single-density moulded E.V.A. foam.

**OUTSOLE:** TPR.

**PLUS:** Projected on woman last.



**C6402**  
aruba blue/teaberry



**C6403**  
fluo pink/black



16

# 171448 HAWK 7 W

WOMAN

Sizes 4-8H (woman)

Woman Last

NEW ITEM

MSRP: \$79.99

**UPPER:** Nylon mesh and Suprellsoft.

**INSOLE:** Cotton jersey and shock-absorbing E.V.A. foam.

**MIDSOLE:** Single-density moulded E.V.A. foam.

**OUTSOLE:** Anti-abrasion rubber.

**PLUS:** Projected on woman last.



**C5162**  
jet black/white



**C6398**  
deep ultramarine/bright white



# 170102 HAWK 5

UNISEX



MSRP: \$69.99

**UPPER:** Nylon mesh and Suprellsoft.

**INSOLE:** Cotton jersey and shock-absorbing E.V.A. foam.

**MIDSOLE:** Single-density moulded E.V.A. foam.

**OUTSOLE:** TPR.

**SIZES:**

**Man sizes**

4-8H

(Woman sizes: 5H-10)



**C5696**

fluo blue/white



# 161258 HAWK 4

UNISEX



MSRP: \$69.99

**UPPER:** Nylon mesh and Suprellsoft.

**INSOLE:** Cotton jersey and shock-absorbing E.V.A. foam.

**MIDSOLE:** Single-density moulded E.V.A. foam.

**OUTSOLE:** TPR.

**SIZES:**

**Man sizes**

4-8

(Woman sizes: 5H-9H)



**C4201**

silver/shocking pink

# 161268 NJ-303-1 RS JR

**RUNNING/JUNIOR**

Sizes 10H / 11H / 12H / 13 / 1 / 2 / 3 / 4

MSRP: \$79.99

**UPPER:** Nylon ripstop.

**INSOLE:** Removable anatomical in mesh water repellent and breathable. Elastom E.V.A foam perforated and breathable.

**MIDSOLE:** Injected Elaston E.V.A foam. Special breathable waterproof membrane. Protection NET in synthetic fibre jointed to the midsole.

**OUTSOLE:** Hi-density rubber.



**C4891**  
fluo pink/white



# 18 171264 HAWK 7 JR

**RUNNING/JUNIOR**

Sizes 10H / 11H / 12H / 13 / 1-6

MSRP: \$69.99

**UPPER:** Nylon mesh and suprellsoft. Lace/Strap closure.

**INSOLE:** Cotton jersey and shock-absorbing E.V.A. foam.

**MIDSOLE:** Single-density moulded E.V.A. foam.

**OUTSOLE:** Anti-abrasion rubber.

**NEW ITEM**



**C3628**  
royal/red



**C5696**  
blue fluo/white



**RUNNING/JUNIOR**

**170810 HAWK 6 JR**

MSRP: \$69.99

**UPPER:** Nylon mesh and Supreltech. Strap closure.  
**SIZES:** 10H / 11H / 12H / 13 / 1-6



**C0641**  
black/white



**C4337**  
fuchsia pink/white



**170171 JAZZY 5 V JR**

MSRP: \$59.99

**UPPER:** Nylon mesh and Supreltech. Strap closure.  
**SIZES:** 10H / 11H / 12H-3



**C1970**  
royal/white



19

**161261 JAZZY 4 V JR**

MSRP: \$59.99

**UPPER:** Nylon mesh and suprell soft. Strap closure.  
**INSOLE:** Cotton jersey and shock-absorbing E.V.A. foam.  
**MIDSOLE:** Single-density moulded E.V.A. foam.  
**OUTSOLE:** Hi-density rubber.



**C2763**  
steel gray/black  
**Sizes**  
10H-13 / 1 / 2 / 3 / 4



**C0820**  
orchid/white  
**Sizes**  
10H-13 / 1 / 2 / 3 / 4



**C0618**  
classic navy/dark red  
**Sizes**  
10H-13 / 1 / 2 / 3 / 4 / 5 / 6



**C4770**  
light gray/pink violet/magenta  
**Sizes**  
10H-13 / 1 / 2 / 3 / 4

# 171269 SHAPE 7 V JR

RUNNING/JUNIOR

Sizes 10H / 11H / 12H / 13 / 1-6

**NEW**  
ITEM

MSRP: \$59.99

**UPPER:** Nylon mesh and Suprellsoft.  
Strap closure.

**INSOLE:** Cotton jersey and shock-absorbing  
E.V.A. foam.

**MIDSOLE:** Injected E.V.A. foam. C.C.B.

**OUTSOLE:** TPR.



**C1970**  
royal/white



# 20 170173 SHAPE 5 V JR

RUNNING/JUNIOR

Sizes 10H 13 / 1-3

MSRP: \$59.99

**UPPER:** Nylon mesh and Supreltech.  
Strap closure.



**C2418**  
gray/orange



**C4778**  
light gray/violet/white



**RUNNING/JUNIOR/INFANT**

**171268 SHAPE 7 JR**

**NEW  
ITEM**



MSRP: \$54.99

**UPPER:** Nylon mesh and Suprellsoft.  
**INSOLE:** Cotton jersey and shock-absorbing E.V.A. foam.  
**MIDSOLE:** Injected E.V.A. foam. C.C.B.  
**OUTSOLE:** TPR.  
**SIZES:** 10H / 11H / 12H / 13 / 1-6



**C1970**  
royal/white



**170172 SHAPE 5 JR**

MSRP: \$54.99



**UPPER:** Nylon mesh and Supreltech.  
**SIZES:** 10H-13 / 1-6



**C2418**  
gray/orange



**C4778**  
light gray/violet/white



21

**161264 JAZZY 4 V I**

MSRP: \$39.99



**UPPER:** Nylon and suprell soft. Strap closure.  
**INSOLE:** Cotton jersey and shock-absorbing E.V.A. foam.  
**MIDSOLE:** Single-density moulded E.V.A. foam.  
**OUTSOLE:** TPR.  
**SIZES:** 7c / 8c / 9c / 10c



**C3096**  
classic navy/micro blue



**C3916**  
silver dd/pink shocking



Adult Sizes	UK	3	3H	4	4H	5	5H	6	6H	7	7h	8	8h	9	9h	10	10H	11	11H	12	12H	13	13H	
	USA "W"	5	5h	6	6h	7	7h	8	8h	9	9h	10	10H	11										
	USA "M"	3H	4	4H	5	5H	6	6h	7	7h	8	8h	9	9h	10	10H	11	11H	12	12H	13	13H	14	
	EURO	35H	36	36H	37	38	38H	39	40	40H	41	42	42H	43	44	44H	45	45H	46	47	47H	48	49	

Junior & Toddler Sizes	UK	3h	4H	5	6	7	8	8H	9H	10	11	11H	12	12H	13	13H	1	1H	2	2H	3	3H	4	4H	5	5H
	EURO	20	21	22	23	24	25	26	27	28	29	29H	30	31	31H	32	33	33H	34	35	35H	36	36H	37	38	38H
	USA	4	5	5H	6H	7H	8H	9	10	10H	11H	12	12H	13	13H	1	1H	2	2H	3	3H	4	4H	5	5H	6



# TERMS AND CONDITIONS

Submission of an order for goods to Logica Sport (Diadora Canada) is regarded as an acceptance of the terms and conditions of Logica Sport as outlined below. There will be absolutely no resale of footwear, apparel or accessories purchased from Logica Sport without express written authorization.

## TERMS OF SALE

Terms of sale are subject to change on 30 days written notification.

## PRICING POLICY

Prices are subject to change without notice. Prices will be invoiced as stated on the order which has been accepted by Logica Sport

## GST

The wholesale pricing and suggested retail pricing in the catalogue are net of Goods and Service Tax. The GST at the prevailing rate will be added to the bottom of the invoice as a charge for the total value of the invoice including freight/postage where applicable.

## PAYMENT TERMS

All invoices are due for payment within 30 days of the invoice date unless otherwise agreed upon in writing.

## CREDIT APPROVAL

All orders are subject to acceptance and approval prior to shipment. Customers shall be liable to pay all service charges and any collection costs incurred by Logica Sport to collect amounts due.

## SERVICE CHARGES

A service charge of 1.5% per month (18% per annum) will be applied to account balance past due.

## SHIPPING POLICY

Logica Sport will attempt to ship all orders on requested shipping dates, however, should situations result in delay or non-delivery, Logica Sport will not be held liable.

## FREIGHT POLICY

All regular and booking orders will be shipped F.O.B. Logica distribution centre, buyer's risk in transit and will be shipped via means determined by Logica unless otherwise specified by the customer.

## BACK ORDERS

All backorders over 60 days will be returned to Logica's representative to be revised with the customer.

## SHORTAGES AND OTHER IRREGULARITIES

A notation of outer carton damage and/or removal/replacement of the tamper-proof tape must be made on the signed pro bill at the time of delivery and reported to the carrier and Logica in writing within 5 days of the received date. Any shortage of irregularity or dissatisfaction regarding the quantity shipped, discounts or conditions of sale must be reported to Logica office within 10 days of receipt. Failure to do so will constitute complete customer acceptance of the order as shipped and invoiced.

## SECONDS OR REJECTS

Any item purchased as a second or reject does not carry any warranty for workmanship and materials and is sold as is. Concerning such items, none of the trademarks may be used in any advertising or promotional publicity.

## PROCEDURES AND CONDITIONS TO RETURN GOODS

1. Contact a Customer Service Representative at Logica's Customer Service Centre – Toll free: 877-756-4422
2. The Customer Service Representative will discuss the situation with the customer and provide a return authorization number (RMA) to authorize returns.
3. All goods authorized for return must be shipped back to the Logica warehouse freight PREPAID to the destination.
4. Write the Return Authorization number on the outside of all cartons/packages returned.
5. Merchandise for return must be in original packaging, free of all price tickers and in resalable condition.
6. Non-resalable merchandise may not be returned to Logica unless defective.
7. Discontinued merchandise may not be returned.
8. Merchandise returned will be subject to a 25% restocking charge if tickets, price tags or other markings are on product.
9. Merchandise returned in excess of that authorized by Customer Service, will remain at the risk of the Customer, and will be returned to the Customer, freight collect.

## CONSUMER WARRANTY AND DEALER REPLACEMENT POLICY

Logica products are warranted only to direct commercial customers against manufacturing defects in workmanship and material under normal use and maintenance. Logica reserves the right to inspect products alleged to be defective for evidence of misuse or abuse and determine whether in Logica sole determination a repair or replacement, if any, of the defective product is due. The liability of Logica's under this warranty shall be limited to repair or replacement. In no event shall Logica be liable for special incidental or consequential damages whatsoever. Seller has made no other representations or warranties, expressed or implied, as to any matter whatsoever, and there are no implied warranties of merchantability or fitness for a particular purpose.

## RETAIL PRICES

All retail prices set forth in this catalogue are suggested prices.

## DIVERSION OF MERCHANDISE

To enhance informed selection and promote product image, Logica only sells to selected retail outlets which may not resell to any person or entity who is not also the final user or consumer. The resale trans-shipment or any form of diversion of Logica product to anyone other than the final consumer is expressly prohibited. Such activity may subject the violator to termination of relationship with Logica and constitutes a breach of the contract of sale for which Logica may seek the appropriate legal remedies, including monetary damages or injunctive relief. Under such circumstances Logica also reserves the right to cancel orders previously accepted and to require the return, at such re-seller's expense, of any diverted merchandise.

## SELLING OF PRODUCT

Retailer is authorized to sell Logica products from its established, permanent retail outlet(s) only. The sale of Logica products through the mail, by catalogue, by temporary or transient retail locations, through any electronic means (including the internet and/or on-line) or by any means other than at an established, permanent retail outlet, must be pre-authorized in writing by Logica Sport.

## ADVERTISING

All use of Logica trademarks and images must be submitted to Logica for final approval.

## CONDITIONS DE VENTE

Les conditions de vente peuvent être modifiées sur avis écrit de 30 jours.

## TARIFICATION

Les prix peuvent changer sans préavis, et toute la marchandise expédiée sera facturée au prix en vigueur à la date d'expédition.

## TPS

Les prix de gros et les prix détail suggérés dans ce catalogue n'incluent pas la taxe sur les produits et services (TPS). La TPS (au taux en vigueur) sera ajoutée au bas de la facture et appliquée sur le montant total de la facture incluant les frais de transport/poste s'il y a lieu.

## MODALITÉS DE PAIEMENT

Toutes les factures doivent être réglées dans les 30 jours suivant la date de facturation à moins d'un avis contraire par écrit.

## AUTORISATION DE CRÉDIT

Toutes les commandes doivent être approuvées avant d'être expédiées. Les clients devront payer tous les frais de gestion et tous les frais de recouvrement engagés par Logica pour récupérer un solde en souffrance.

## FRAIS DE GESTION

Des frais de gestion de 1,5 % par mois (18 % par année) seront portés aux comptes en souffrance.

## EXPÉDITION

Logica mettra tout en œuvre pour respecter les dates de livraison demandées, toutefois, en cas de retard ou de non-livraison, Logica ne sera pas tenu responsable.

## TRANSPORT

Les commandes régulières et les commandes sur réservation seront expédiées F.A.B. du centre de distribution de Logica, aux risques de l'acheteur pendant le transit, par des moyens déterminés par Logica à moins d'avis contraire par le client.

## COMMANDES EN ATTENTE

Les commandes en attente depuis plus de 60 jours sont automatiquement retournées au représentant de Logica pour qu'il les passent en revue avec le client.

## LIVRAISON INCOMPLÈTE ET AUTRES IRRÉGULARITÉS

Une notification de tout dommage aux boîtes et/ou ruban protecteur au moment de la livraison doit être inscrite sur la facture. Un avis écrit doit être envoyé à Logica et au transporteur dans les 5 jours suivants la livraison. Le client sera responsable d'avoir accepté intégralement la commande telle qu'elle a été expédiée et facturé à moins qu'il n'ait avisé par écrit au bureau de Logica de tout produit manquant, irrégularité ou autre motif d'insatisfaction relativement aux quantités expédiées, aux conditions de vente dans les 10 jours suivant la livraison.

## ARTICLES DE SECOND CHOIX OU DE REBUT

Tout produit acheté à titre d'article de second choix ou de rebut ne comporte aucune garantie de fabrication ni de matériel et est vendu tel quel. Pour ce qui est de ces articles, aucune des marques déposées de Logica ne peut être utilisée dans aucune publicité ou offre promotionnelle sur ces articles.

## RETOUR DE MARCHANDISES : MARCHÉ À SUIVRE ET CONDITIONS

- 1- Communiquer avec le centre de service à la clientèle – sans frais: 877-756-4422
- 2- Le représentant évaluera avec le client la situation et vous donnera un numéro d'autorisation de retour.
- 3- Tous les articles dont le retour a été autorisé doivent être expédiés port payé à l'entrepôt de Logica.
- 4- Écrire le numéro d'autorisation de retour à l'extérieur de toutes les boîtes ou paquets à l'entrepôt de Logica.
- 5- Les articles doivent être retournés dans leur emballage original, sans étiquette de prix et condition de revente.
- 6- Les marchandises non vendables ne peuvent pas être retournées à Logica à moins que la marchandise ne soit défectueuse.
- 7- Les articles de fin de série ne peuvent pas être retournés.
- 8- La marchandise retournée sera sujette à une charge de 25% si les étiquettes ou autres éléments ne sont pas attachés aux produits.
- 9- La marchandise retournée à celui alloué par le service aux consommateurs sera la responsabilité du client et sera retournée au client C.O.D.

## GARANTIE DU CONSOMMATEUR ET POLITIQUE DE REMPLACEMENT AU DÉTAILLANT

Les produits Logica sont garantis uniquement aux clients commerciaux directs contre tous défauts de fabrication ou de matières premières dans les conditions normales d'utilisation et d'entretien. Logica se réserve le droit d'inspecter les produits défectueux pour déceler toute trace d'abus ou de mauvais usage et de déterminer de sa propre autorité si des réparations ou un remplacement s'imposent. Cette garantie limite la responsabilité légale de Logica à la réparation ou au remplacement. En aucun cas, Logica ne sera tenu responsable de dommages indirects ou secondaires particuliers, quels qu'ils soient. Le représentant n'a fait aucune autre représentation ou garantie, expresse ou tacite, concernant quoi que ce soit, et il n'y a aucune garantie implicite de qualité loyale et marchande ou d'ajustement dans un but particulier.

## PRIX DU DÉTAIL

Les prix de détail indiqués dans ce catalogue sont des prix suggérés.

## DÉTournement DE LA MARCHANDISE

Pour relever une sélection informée et promouvoir l'image des produits, Logica vend à des magasins sélectionnés à la condition expresse que ces magasins ne revendent pas à d'autres personnes ou personnes morales qui ne sont pas l'utilisateur ou le consommateur final. La revente, le transfert ou toute autre forme de détournement de produit Logica à toute personne autre que le consommateur final est interdite. De telles activités peuvent entraîner la résiliation du contrat du contrevenant et constituer une rupture de contrat de vente pour laquelle Logica pourrait prendre des mesures légales appropriées, notamment des dommages-intérêts ou une injonction. Dans ces circonstances, Logica se réserve aussi le droit d'annuler les commandes préalablement acceptées et d'exiger le retour, aux frais du revendeur, de toutes marchandises détournées.

## VENTE DE PRODUITS

Le détaillant n'a l'autorisation de vendre les produits de Logica que depuis son (ses) magasin (s) permanent de vente au détail. La vente de produits Logica par l'entremise de la poste, d'un catalogue, par location de vente au détail en transit temporaire, de moyens électroniques (y compris par l'internet et/ou en ligne) ou de tout moyen autre qu'un magasin au détail doit être autorisée d'avance par écrit par Logica Sport.

## PUBLICITÉ

Tout usage de marque commerciale et des images de Logica doivent être approuvés par Logica.



# DIADORA



**Diadora Canada**  
12060 Albert-Hudon  
Montreal-Nord, Quebec, H1G 3K7

**Toll Free: 1.877.756.4422**  
**Fax: 514.387.1534**  
**diadora@logica.ca**  
**www.diadora.com**

Distributed by

