



DIADORA



RUNNING
FALL 2016



INDEX

NET BREATHING SYSTEM	4	RUNNING WOMAN	
TECHNOLOGIES	5	TECHNICAL RUNNING	16
FOOTWEAR CHART	7	LIGHT RUNNING	18
RUNNING MAN	8	RUNNING JUNIOR & INFANT	22
TECHNICAL RUNNING	12	TERMS & CONDITIONS	26
LIGHT RUNNING			



NET BREATHING SYSTEM™ - Geox licensed technology

NET BREATHING SYSTEM™

**NET
BREATHING
SYSTEM™**

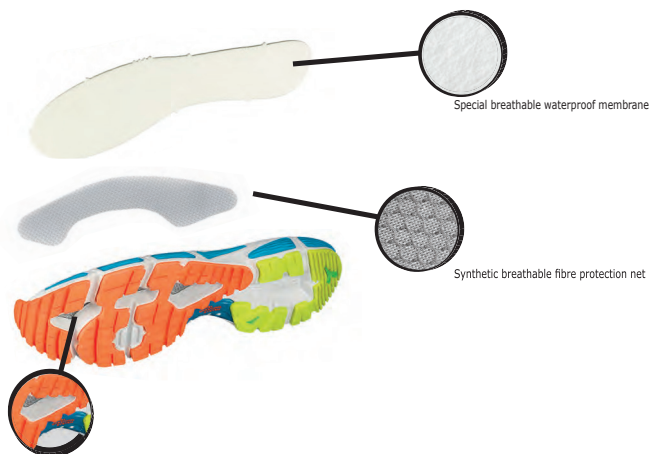
Geox licensed technology

The innovative and exclusive NET Breathing System™ lets feet breathe. Improves performance by increasing concentration, endurance and precision.

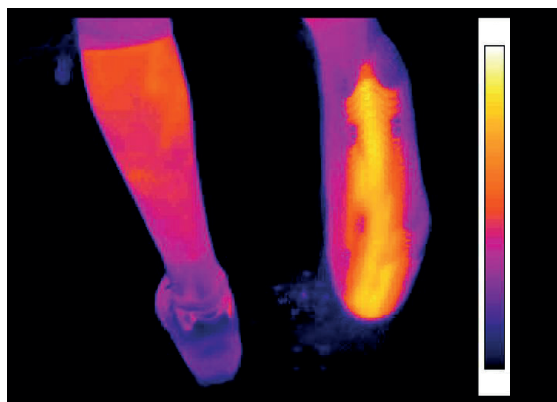
THE PATENT: NET Breathing System™

The synthetic fibre net and the special breathable, waterproof membrane of the sole improve breathability while keeping moisture, mud and debris out of the shoe and feet dry.

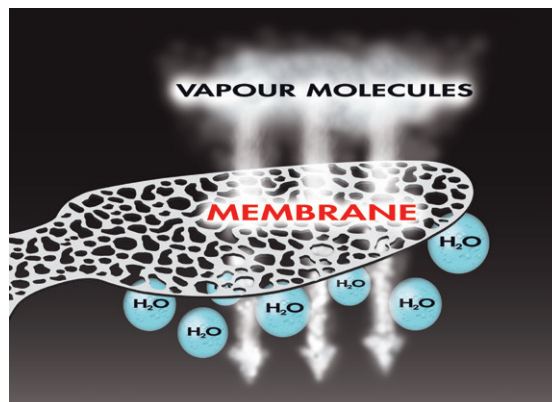
THE PATENT



THE BENEFITS



Computerised thermal imaging shows that the NET Breathing System™ minimizes the barrier to foot breathability, expelling excess heat through most of the sole surface.



The breathable waterproof membrane improves sole breathability, while keeping moisture out of the shoe.



TECHNOLOGIES

NET BREATHING SYSTEM



The sole's surface is made of a synthetic fibre mesh and special breathable and waterproof membrane. NET Breathing System™ increases the sole's transpiration capacity, preventing moisture, mud and other external elements from entering the shoe, and thus keeping the foot dry.

AXELER



AXELER: the super light Axeler technology is composed of a frame of Tech Alloy (a special alloy of harmonic steel) which increases the propulsive capacity of the mid-sole. Axeler has been engineered to insure a high stability of the foot together with an exceptional bending capacity and a perfect weight distribution so to accompany and follow the foot in its every movement. The integration of Axeler with CCB improves support to the foot arch and to the torsion control.

AXELER PROPULSION



AXELER PROPULSION: is made of Pebax, a material with elevated elastic memory that maintains its characteristics over time. The chevron shape of the Pebax element guarantees maximum propulsive energy during the thrust phase, which is generated by the compression upon impact with the ground. Each individual propulsor is built from single elements in order to ensure maximum comfort and flexibility, either longitudinal or transverse.

MICROBE BARRIER



MICROBE BARRIER

MICROBE BARRIER: special anti-bacteria treatment applied to the internal shoe fabric. The bactericide treatment remains even after several washes.

DA-DA²



DA-DA²: Diadora exclusive shock-absorbing system comprising two elastomers with a different density situated in the heel and metatarsal area. Conceived to guarantee the maximum impact absorption, eliminating negative vibrations in the heel area, and to enhance flexibility and distribution of pressures in the forefoot area.

FLEXOFT



FLEXOFT: a particular rubber and foam compound developed to guarantee lightweight, flexibility, shock absorption and better propulsion in the forefoot area.

DURATECH 5000

DURATECH 5000

DURATECH 5000: special wear-resistant rubber compound assuring a far higher wear resistance than standard rubber, offering an effective solution to shoe heel wear.

CCB

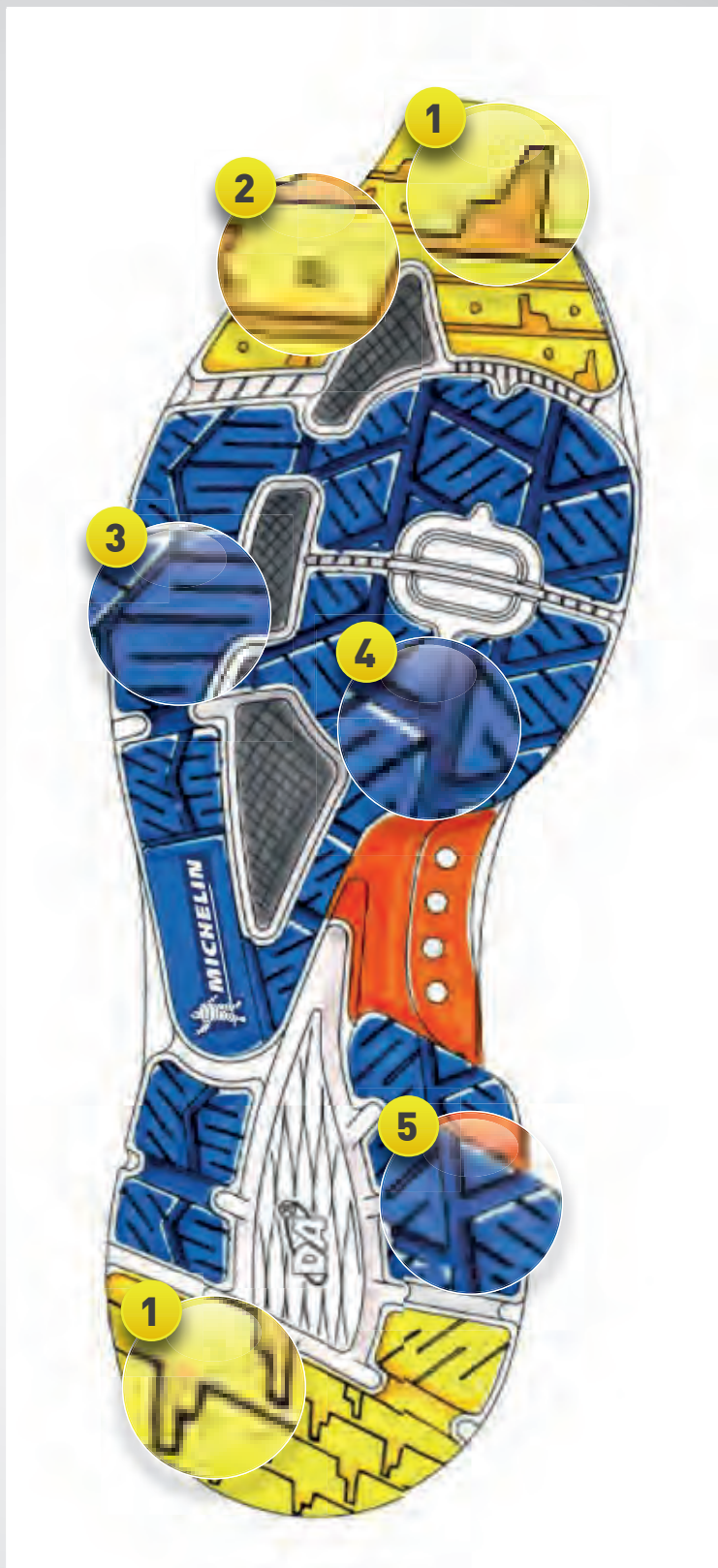


CCB: medial stabilizer created to control torsional stability of the area of the arch support, giving the shoe lightness and stability without altering shock absorption.

ELASTON

ELASTON

ELASTON: exclusive blend used to make midsoles and insoles, based on the use of special compound which gives the product high elasticity while maintaining its characteristics for a long time. The capacity of maximum return to the original form after the load phase improves the general comfort of the product and the absorption of impact on the ground.



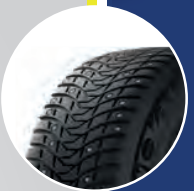
PARTNERSHIP WITH
DIADORA



INSPIRED BY:
MICHELIN®
PILOT ALPIN WRC



INSPIRED BY:
MICHELIN®
X-ICE NORTH 3



- 1 Aggressive toe and heel tread design for optimal traction and braking.
- 2 Micro-pumps absorb water from the surface improving evacuation and allow wide contact with the ground.
- 3 Multi-directional siped sculpture to improve adherence in cold condition.
- 4 Large grooves for optimal snow and water evacuation.
- 5 Bigger siped sculpture to increase support and comfort.

MICHELIN® WINTER RUN

BENEFITS

- OPTIMAL PERFORMANCE IN WINTER CONDITION
- EXCELENT WATER EVACUATION INCREASING CONTROL ON WET SURFACE
- SPECIFIC ANTI-SLIP TREAD DESIGN

Wic

WINTER COMPOUND

- Cold temperature resistance
- Firm grip down to - 40°
- Soft antislip rubber
- Good abrasion resistance

COPYRIGHT © BY JV INTERNATIONAL S.R.L. 05/2014 - WARNING - This confidential document and all specifications, drawings and data here in contained and the products manufactured in accordance with the said drawings, specifications and data are the exclusive property of JV International s.r.l. company, all over the world, either directly or indirectly, in whole or in part, participated by JV International, as the case may be in accordance with the provisions of any applicable National Laws and Regulations as well as of any applicable International Conventions for the protection of Intellectual Property Rights. Any disclosures, dissemination, copy, use, manufacture, advertising, and sale of the said drawings, specifications, data and products are strictly forbidden without the prior written consent of JV International s.r.l. and will be properly prosecuted in accordance with the provisions of any applicable laws. The characteristics of this outsole are for expected normal use.

POWERED BY MICHELIN® TECHNICAL SOLES



FALL 2016 RUNNING COLLECTION

MAN

TECHNICAL RUNNING



N-4100-2 WIN BRIGHT
MSRP: \$199.99



N-4100-2 BRIGHT
MSRP: \$189.99



MYTHOS SHINDANO PLUS ST
MSRP: \$149.99



MYTHOS SHINDANO III
MSRP: \$139.99



NJ-404-2
MSRP: \$119.99



NJ-404-2
MSRP: \$119.99

LIGHT RUNNING



NJ-303-2 WIN
MSRP: \$119.99



NJ-303-2 WIN
MSRP: \$119.99



NJ-303-2
MSRP: \$99.99



SWAN
MSRP: \$79.99



SWAN
MSRP: \$79.99



RAID
MSRP: \$79.99



RAID
MSRP: \$79.99



170102 - HAWK
MSRP: \$69.99



170102 - HAWK
MSRP: \$69.99



161258 - HAWK
MSRP: \$69.99



170104 - SHAPE
MSRP: \$59.99



161257 - SHAPE
MSRP: \$59.99

WOMAN

TECHNICAL RUNNING



N-4100-2 WIN BRIGHT W
MSRP: \$199.99



N-4100-2 BRIGHT W
MSRP: \$189.99



MYTHOS SHINDANO III W
MSRP: \$139.99



NJ-404-2 W
MSRP: \$119.99



NJ-404-2 W
MSRP: \$119.99

LIGHT RUNNING



NJ-303-2 WIN W
MSRP: \$119.99



NJ-303-2 WIN W
MSRP: \$119.99



NJ-303-2 W
MSRP: \$99.99



NJ-303-2 W
MSRP: \$99.99



SWAN
MSRP: \$79.99



SWAN
MSRP: \$79.99



170102 - HAWK
MSRP: \$69.99



161258 - HAWK
MSRP: \$69.99



161257 - SHAPE
MSRP: \$59.99

JUNIOR - INFANT



NJ-303-1 RS JR
MSRP: \$79.99



NJ-303-1 RS JR
MSRP: \$79.99



HAWK 6 JR
MSRP: \$69.99



HAWK 6 JR
MSRP: \$69.99



170171 - JAZZY JR
MSRP: \$59.99



161261 - JAZZY JR
MSRP: \$59.99



161261 - JAZZY JR
MSRP: \$59.99



161261 - JAZZY JR
MSRP: \$59.99



161261 - JAZZY JR
MSRP: \$59.99



170170 - JAZZY JR
MSRP: \$54.99



170173 - SHAPE JR
MSRP: \$54.99



170173 - SHAPE JR
MSRP: \$54.99



170172 - SHAPE JR
MSRP: \$49.99



170172 - SHAPE JR
MSRP: \$49.99



JAZZY 4 V I
MSRP: \$39.99



JAZZY 4 V I
MSRP: \$39.99

170781 N-4100-2 WIN BRIGHT

CUSHIONING/MAN

weight 325gr

Sizes 7-12 / 13

NET BREATHING SYSTEM™



DURATECH 5000



NEW ITEM

NET BREATHING SYSTEM™
Geox licensed technology

MSRP: \$199.99



8

UPPER: 3M nylon. Construction with water-repellent materials. Microfleece internal lining.

INSOLE: Removable anatomical bi-density in mesh water repellent and breathable and shock-absorbing Elastom E.V.A. and PU foam antishock perforated and breathable.

MEMBRANE: Special breathable waterproof membrane.

PROTECTION NET: In synthetic fibre jointed to the midsole.

MIDSOLE: Moulded Elastom E.V.A. foam. Double Action² in the heel area.

OUTSOLE: Michelin special compound, ideal on wet grounds.



C3451

black/silver/yellow fluo dd



170502 N-4100-2 BRIGHT

CUSHIONING / MAN

weight 330gr

Sizes 6 / 7-12 / 13

NET BREATHING SYSTEM™



DURATECH 5000



MSRP: \$189.99



9

UPPER: Nylon air mesh and Supreltech. Lasting board in Elastom E.V. A. Lining with special anti-bacteria treatment. 3M

INSOLE: Removable anatomical bi-density in mesh water repellent and breathable and shock-absorbing Elastom E.V.A. and PU foam antishock perforated and breathable.

MEMBRANE: Special breathable waterproof membrane.

PROTECTION NET: In synthetic fibre jointed to the midsole.

MIDSOLE: Moulded Elastom E.V.A. foam. Double Action² in the heel area.

OUTSOLE: Blown Flexoft Rubber in the front area. Special Duratech 5000 wearproof compound in the heel area.



C3612

silver dd/fluo yellow



170107 MYTHOS SHINDANO PLUS ST

STABILITY/MAN

weight 305gr

Sizes 7-12 / 13

DOS



MSRP: \$149.99

UPPER: Nylon air mesh and Supreltech. Lining with special anti-bacteria treatment.

INSOLE: Removable anatomical shock-absorbing Elastom E.V.A. foam.

MIDSOLE: Moulded bidensity Elastom E.V.A. foam (D.O.S system). Double Action² in the heel area. C.C.B. Axeler in titanium.

OUTSOLE: Blown Flexoft Rubber in the front area. Special Duratech 5000 wearproof compound in the heel area.



C3189

royal/orange



10

160499 MYTHOS SHINDANO III

CUSHIONING/MAN

weight 310gr

Sizes 6 / 7-12 / 13



MSRP: \$139.99

UPPER: Nylon air mesh and Supreltech. Lasting board in PU foam. Lining with special anti-bacteria treatment.

INSOLE: Removable anatomical shock-absorbing Elastom E.V.A. foam.

MIDSOLE: Moulded Elastom E.V.A. foam. Double Action² in the heel area. C.C.B.. Axeler in titanium.

OUTSOLE: Blown Flexoft Rubber in the front area. Special Duratech 5000 wearproof compound in the heel area.



C5214

fluo yellow/sky diva blue



160510 NJ-404-2

CUSHIONING/MAN

Sizes 8-12

**NET
BREATHING
SYSTEM™**



MSRP: \$119.99

UPPER: Nylon mesh and suprell soft.

INSOLE: Removable anatomical in mesh water repellent and breathable. Elastom E.V.A foam perforated and breathable.

MIDSOLE: Injected Elastom E.V.A foam. Special breathable waterproof membrane. Protection NET in synthetic fibre jointed to the midsole.

OUTSOLE: Hi-density rubber.



C4034
black/green



C4591
gray/royal



170795 NJ-303-2 WIN

CUSHIONING/MAN

weight 240gr

Sizes 6H-11 / 12 / 12H

NET BREATHING SYSTEM™

NEW ITEM



MSRP: \$119.99

UPPER: Nylon ripstop.

INSOLE: Removable anatomical cotton jersey and shock-absorbing Elastom E.V.A foam.

MIDSOLE: Injected Elastom E.V.A foam. Full-size special breathable waterproof membrane. Protection NET in synthetic fibre jointed to the midsole.

OUTSOLE: Hi-density rubber.



C1927
black/gray rock



C4981
green olivina/gray

12

170090 NJ-303-2

CUSHIONING/MAN

weight 230gr

Sizes 6H-12H

NET BREATHING SYSTEM™



MSRP: \$99.99

UPPER: Nylon mesh and Suprellsoft.

INSOLE: Removable anatomical in mesh water repellent and breathable. Elastom E.V.A foam perforated and breathable.

MIDSOLE: Injected Elastom E.V.A foam. Special breathable waterproof membrane. Protection NET in synthetic fibre jointed to the midsole.

OUTSOLE: Hi-density rubber.



C4546
gray/classic navy

170103 SWAN

UNISEX

NEW
COLOR



MSRP: \$79.99

UPPER: Nylon mesh and Suprellsoft.

INSOLE: Removable. Cotton jersey and shock-absorbing E.V.A. foam. Memory foam.

MIDSOLE: Single-density moulded E.V.A. foam.

OUTSOLE: TPR.



C4708
black/pewter

SIZES:
6H-11 / 12 / 12H



C2157
dark denim/tuareg navy

SIZES:
7-12H



160508 RAID

TRAIL/MAN

Sizes 8 / 9-12

13



MSRP: \$79.99

UPPER: Nylon mesh and suprell soft.

INSOLE: Cotton jersey and shock-absorbing E.V.A. foam.

MIDSOLE: Single-density moulded E.V.A. foam.

OUTSOLE: TPR.



C1462
black/red



C3210
royal/navy



HAWK COLLECTION

UNISEX

170102



MSRP: \$69.99

UPPER: Nylon mesh and Suprellsoft.

INSOLE: Cotton jersey and shock-absorbing E.V.A. foam.

MIDSOLE: Single-density moulded E.V.A. foam.

OUTSOLE: TPR.



SIZES:
6H-12H

C2418
gray/orange



SIZES:
6H-12

C5352
red/eyes blue



14

161258



MSRP: \$69.99

UPPER: Nylon mesh and Suprellsoft.

INSOLE: Cotton jersey and shock-absorbing E.V.A. foam.

MIDSOLE: Single-density moulded E.V.A. foam.

OUTSOLE: TPR.

SIZES: 7 / 8 / 9-11 / 12



C4062
classic navy/gray



SHAPE COLLECTION

UNISEX

170104



MSRP: \$59.99

UPPER: Nylon mesh and Suprellsoft.

INSOLE: Cotton jersey and shock-absorbing E.V.A. foam.

MIDSOLE: Single-density moulded E.V.A. foam.

OUTSOLE: TPR.

SIZES: 5 / 6-11 / 12 / 12H



C0200
black/black



15

161257



MSRP: \$59.99

UPPER: Nylon mesh and suprell soft.

INSOLE: Cotton jersey and shock-absorbing E.V.A. foam.

MIDSOLE: Single-density moulded E.V.A. foam.

OUTSOLE: TPR.

SIZES: 8-12



C1423
navy/white



170784 N-4100-2 WIN BRIGHT W

CUSHIONING/WOMAN

weight 280gr

Sizes 6-10 (woman)



NEW ITEM

MSRP: \$199.99

UPPER: 3M nylon. Construction with water-repellent materials. Microfleece internal lining.

INSOLE: Removable anatomical bi-density in mesh water repellent and breathable and shock-absorbing Elastom E.V.A. and PU foam antishock perforated and breathable.

MEMBRANE: Special breathable waterproof membrane.

PROTECTION NET: In synthetic fibre jointed to the midsole.

MIDSOLE: Moulded Elastom E.V.A. foam. Double Action² in the heel area.

OUTSOLE: Michelin special compound, ideal on wet grounds.

PLUS: Projected on woman last.



C0787
black/silver



16

170503 N-4100-2 BRIGHT W

CUSHIONING/WOMAN

weight 280gr

Sizes 5H-10 (woman)



MSRP: \$189.99

UPPER: Nylon air mesh and Supreltech. Lasting board in Elastom E.V.A. Lining with special anti-bacteria treatment.

INSOLE: Removable anatomical bi-density in mesh water repellent and breathable and shock-absorbing Elastom E.V.A. and PU foam antishock perforated and breathable.

MEMBRANE: Special breathable waterproof membrane.

PROTECTION NET: In synthetic fibre jointed to the midsole.

MIDSOLE: Moulded Elastom E.V.A. foam. Double Action² in the heel area. C.C.B.

OUTSOLE: Blown Flexoft Rubber in the front area. Special Duratech 5000 wearproof compound in the heel area.

PLUS: Projected on woman last.



C3916
silver dd/shocking pink



160503 MYTHOS SHINDANO III W

CUSHIONING/WOMAN weight 270gr

Sizes 5H-10 (woman)



MSRP: \$139.99

UPPER: Nylon air mesh and Supreltech. Lasting board in PU foam. Lining with special anti-bacteria treatment.

INSOLE: Removable anatomical shock-absorbing Elastom E.V.A. foam.

MIDSOLE: Moulded Elastom E.V.A. foam. Double Action² in the heel area. C.C.B.. Axeler in titanium.

OUTSOLE: Blown Flexoft Rubber in the front area. Special Duratech 5000 wearproof compound in the heel area.

PLUS: Projected on woman last.



C0820
orchid/white



160512 NJ-404-2 W

CUSHIONING/WOMAN

Sizes 5H-8H / 9H (woman)



MSRP: \$119.99

UPPER: Nylon mesh and Suprellsoft.

INSOLE: Removable anatomical in mesh water repellent and breathable. Elastom E.V.A foam perforated and breathable.

MIDSOLE: Injected Elastom E.V.A foam. Special breathable waterproof membrane. Protection NET in synthetic fibre jointed to the midsole.

OUTSOLE: Hi-density rubber.

PLUS: Projected on woman last.



C4573
violet misty/violet crocus/white



C4662
black/fluo pink



170796 NJ-303-2 WIN W

CUSHIONING/WOMAN weight 175gr

Sizes 6-10 (woman)

NET BREATHING SYSTEM™

Woman Last

NEW ITEM



MSRP: \$119.99

UPPER: Nylon ripstop.

INSOLE: Removable anatomical cotton jersey and shock-absorbing Elastom E.V.A foam.

MIDSOLE: Injected Elaston E.V.A foam. Full-size special breathable waterproof membrane. Protection NET in synthetic fibre jointed to the midsole.

OUTSOLE: Hi-density rubber.

PLUS: Projected on woman last.



C4382
violet chalk/granite gray



C0641
black/white

18 170094 NJ-303-2 W

CUSHIONING/WOMAN weight 185gr

Sizes 5H-10 (woman)

NET BREATHING SYSTEM™

Woman Last



MSRP: \$99.99

UPPER: Nylon mesh and Suprellsoft.

INSOLE: Removable anatomical in mesh water repellent and breathable. Elastom E.V.A foam perforated and breathable.

MIDSOLE: Injected Elaston E.V.A foam. Special breathable waterproof membrane. Protection NET in synthetic fibre jointed to the midsole.

PLUS: Projected on woman last.



C6051
violet ultra-vio/dewberry



C3772
white/fluo pink

170103 SWAN

UNISEX

NEW
COLOR



MSRP: \$79.99

UPPER: Nylon mesh and Suprellsoft.

INSOLE: Removable. Cotton jersey and shock-absorbing E.V.A. foam. Memory foam.

MIDSOLE: Single-density moulded E.V.A. foam.

OUTSOLE: TPR.



SIZES:
Man sizes
4H-8H

(Woman sizes: 6-10)

C2403

black/violet bouquet



SIZES:
Man sizes
4-8H

(Woman sizes: 5H-10)

C4891

fluo pink/white



HAWK COLLECTION

UNISEX

170102



MSRP: \$69.99

UPPER: Nylon mesh and Suprellsoft.

INSOLE: Cotton jersey and shock-absorbing E.V.A. foam.

MIDSOLE: Single-density moulded E.V.A. foam.

OUTSOLE: TPR.

SIZES:

Man sizes

4-8H

(Woman sizes: 5H-10)



C5696

fluo blue/white



20

161258



MSRP: \$69.99

UPPER: Nylon mesh and Suprellsoft.

INSOLE: Cotton jersey and shock-absorbing E.V.A. foam.

MIDSOLE: Single-density moulded E.V.A. foam.

OUTSOLE: TPR.

SIZES:

Man sizes

4-8

(Woman sizes: 5H-9H)



C4201

silver/shocking pink



161257 SHAPE

UNISEX



MSRP: \$59.99

UPPER: Nylon mesh and suprell soft.

INSOLE: Cotton jersey and shock-absorbing E.V.A. foam.

MIDSOLE: Single-density moulded E.V.A. foam.

OUTSOLE: TPR.

SIZES:

Man sizes

4-7

(Woman sizes: 5H-8H)



C0641
black/white



21



161268 NJ-303-1 RS JR

RUNNING/JUNIOR

Sizes 10H / 11H / 12H / 13 / 1 / 2 / 3 / 4

MSRP: \$79.99

UPPER: Nylon ripstop.

INSOLE: Removable anatomical in mesh water repellent and breathable. Elastom E.V.A foam perforated and breathable.

MIDSOLE: Injected Elaston E.V.A foam. Special breathable waterproof membrane. Protection NET in synthetic fibre jointed to the midsole.

OUTSOLE: Hi-density rubber.



C4034
black/green



C4891
fluo pink/white



22

170810 HAWK 6 JR

RUNNING/JUNIOR

Sizes 10H / 11H / 12H / 13 / 1-6

MSRP: \$69.99

UPPER: Nylon mesh & Suprell soft

NEW ITEM



C0641
black/white



C4337
fuchsia pink/white



JAZZY JUNIOR COLLECTION

RUNNING/JUNIOR

170171



MSRP: \$59.99

UPPER: Nylon mesh and Supreltech. Strap closure.

SIZES: 10H / 11H / 12H-3



C1970

royal/white



161261



MSRP: \$59.99

UPPER: Nylon mesh and suprell soft. Strap closure.

INSOLE: Cotton jersey and shock-absorbing E.V.A. foam.

MIDSOLE: Single-density moulded E.V.A. foam.

OUTSOLE: Hi-density rubber.



23



C2763

steel gray/black

Sizes

10H-13 / 1 / 2 / 3 / 4



C0820

orchid/white

Sizes

10H-13 / 1 / 2 / 3 / 4



C0618

classic navy/dark red

Sizes

10H-13 / 1 / 2 / 3 / 4 / 5 / 6



C4770

light gray/pink violet/magenta

Sizes

10H-13 / 1 / 2 / 3 / 4

170170



MSRP: \$54.99

UPPER: Nylon mesh and Supreltech.

SIZES: 10H / 11H / 12H-6



C1970

royal/white



SHAPE JUNIOR COLLECTION

RUNNING/JUNIOR

170173



MSRP: \$54.99

UPPER: Nylon mesh and Supreltech.
Strap closure.

SIZES: 10H-13 / 1-3



C2418
gray/orange



C4778
light gray/violet/white



24

170172



MSRP: \$49.99

UPPER: Nylon mesh and Supreltech.

SIZES: 10H-13 / 1-6



C2418
gray/orange



C4778
light gray/violet/white



161264 JAZZY 4 V I

RUNNING/INFANT

Sizes 7c / 8c / 9c / 10c



MSRP: \$39.99

UPPER: Nylon and suprell soft. Strap closure.

INSOLE: Cotton jersey and shock-absorbing E.V.A. foam.

MIDSOLE: Single-density moulded E.V.A. foam.

OUTSOLE: TPR.



C3096

classic navy/micro blue



C3916

silver dd/pink shocking



25



TERMS AND CONDITIONS

Submission of an order for goods to Logica Sport (Diadora Canada) is regarded as an acceptance of the terms and conditions of Logica Sport as outlined below. There will be absolutely no resale of footwear, apparel or accessories purchased from Logica Sport without express written authorization.

TERMS OF SALE

Terms of sale are subject to change on 30 days written notification.

PRICING POLICY

Prices are subject to change without notice. Prices will be invoiced as stated on the order which has been accepted by Logica Sport

GST

The wholesale pricing and suggested retail pricing in the catalogue are net of Goods and Service Tax. The GST at the prevailing rate will be added to the bottom of the invoice as a charge for the total value of the invoice including freight/postage where applicable.

PAYMENT TERMS

All invoices are due for payment within 30 days of the invoice date unless otherwise agreed upon in writing.

CREDIT APPROVAL

All orders are subject to acceptance and approval prior to shipment. Customers shall be liable to pay all service charges and any collection costs incurred by Logica Sport to collect amounts due.

SERVICE CHARGES

A service charge of 1.5% per month (18% per annum) will be applied to account balance past due.

SHIPPING POLICY

Logica Sport will attempt to ship all orders on requested shipping dates, however, should situations result in delay or non-delivery, Logica Sport will not be held liable.

FREIGHT POLICY

All regular and booking orders will be shipped F.O.B. Logica distribution centre, buyer's risk in transit and will be shipped via means determined by Logica unless otherwise specified by the customer.

BACK ORDERS

All backorders over 60 days will be returned to Logica's representative to be revised with the customer.

SHORTAGES AND OTHER IRREGULARITIES

A notation of outer carton damage and/or removal/replacement of the tamper-proof tape must be made on the signed pro bill at the time of delivery and reported to the carrier and Logica in writing within 5 days of the received date. Any shortage of irregularity or dissatisfaction regarding the quantity shipped, discounts or conditions of sale must be reported to Logica office within 10 days of receipt. Failure to do so will constitute complete customer acceptance of the order as shipped and invoiced.

SECONDS OR REJECTS

Any item purchased as a second or reject does not carry any warranty for workmanship and materials and is sold as is. Concerning such items, none of the trademarks may be used in any advertising or promotional publicity.

PROCEDURES AND CONDITIONS TO RETURN GOODS

1. Contact a Customer Service Representative at Logica's Customer Service Centre – Toll free: 877-756-4422
2. The Customer Service Representative will discuss the situation with the customer and provide a return authorization number (RMA) to authorize returns.
3. All goods authorized for return must be shipped back to the Logica warehouse freight PREPAID to the destination.
4. Write the Return Authorization number on the outside of all cartons/packages returned.
5. Merchandise for return must be in original packaging, free of all price tickers and in resalable condition.
6. Non-resalable merchandise may not be returned to Logica unless defective.
7. Discontinued merchandise may not be returned.
8. Merchandise returned will be subject to a 25% restocking charge if tickets, price tags or other markings are on product.
9. Merchandise returned in excess of that authorized by Customer Service, will remain at the risk of the Customer, and will be returned to the Customer, freight collect.

CONSUMER WARRANTY AND DEALER REPLACEMENT POLICY

Logica products are warranted only to direct commercial customers against manufacturing defects in workmanship and material under normal use and maintenance. Logica reserves the right to inspect products alleged to be defective for evidence of misuse or abuse and determine whether in Logica sole determination a repair or replacement, if any, of the defective product is due. The liability of Logica's under this warranty shall be limited to repair or replacement. In no event shall Logica be liable for special incidental or consequential damages whatsoever. Seller has made no other representations or warranties, expressed or implied, as to any matter whatsoever, and there are no implied warranties of merchantability or fitness for a particular purpose.

RETAIL PRICES

All retail prices set forth in this catalogue are suggested prices.

DIVERSION OF MERCHANDISE

To enhance informed selection and promote product image, Logica only sells to selected retail outlets which may not resell to any person or entity who is not also the final user or consumer. The resale trans-shipment or any form of diversion of Logica product to anyone other than the final consumer is expressly prohibited. Such activity may subject the violator to termination of relationship with Logica and constitutes a breach of the contract of sale for which Logica may seek the appropriate legal remedies, including monetary damages or injunctive relief. Under such circumstances Logica also reserves the right to cancel orders previously accepted and to require the return, at such re-seller's expense, of any diverted merchandise.

SELLING OF PRODUCT

Retailer is authorized to sell Logica products from its established, permanent retail outlet(s) only. The sale of Logica products through the mail, by catalogue, by temporary or transient retail locations, through any electronic means (including the internet and/or on-line) or by any means other than at an established, permanent retail outlet, must be pre-authorized in writing by Logica Sport.

ADVERTISING

All use of Logica trademarks and images must be submitted to Logica for final approval.

CONDITIONS DE VENTE

Les conditions de vente peuvent être modifiées sur avis écrit de 30 jours.

TARIFICATION

Les prix peuvent changer sans préavis, et toute la marchandise expédiée sera facturée au prix en vigueur à la date d'expédition.

TPS

Les prix de gros et les prix détail suggérés dans ce catalogue n'incluent pas la taxe sur les produits et services (TPS). La TPS (au taux en vigueur) sera ajoutée au bas de la facture et appliquée sur le montant total de la facture incluant les frais de transport/poste s'il y a lieu.

MODALITÉS DE PAIEMENT

Toutes les factures doivent être réglées dans les 30 jours suivant la date de facturation à moins d'un avis contraire par écrit.

AUTORISATION DE CRÉDIT

Toutes les commandes doivent être approuvées avant d'être expédiées. Les clients devront payer tous les frais de gestion et tous les frais de recouvrement engagés par Logica pour récupérer un solde en souffrance.

FRAIS DE GESTION

Des frais de gestion de 1,5 % par mois (18 % par année) seront portés aux comptes en souffrance.

EXPÉDITION

Logica mettra tout en œuvre pour respecter les dates de livraison demandées, toutefois, en cas de retard ou de non-livraison, Logica ne sera pas tenu responsable.

TRANSPORT

Les commandes régulières et les commandes sur réservation seront expédiées F.A.B. du centre de distribution de Logica, aux risques de l'acheteur pendant le transit, par des moyens déterminés par Logica à moins d'avis contraire par le client.

COMMANDES EN ATTENTE

Les commandes en attente depuis plus de 60 jours sont automatiquement retournées au représentant de Logica pour qu'il les passent en revue avec le client.

LIVRAISON INCOMPLÈTE ET AUTRES IRREGULARITÉS

Une notification de tout dommage aux boîtes et/ou urban protecteur au moment de la livraison doit être inscrite sur la facture. Un avis écrit doit être envoyé à Logica et au transporteur dans les 5 jours suivants la livraison. Le client sera responsable d'avoir accepté intégralement la commande telle qu'elle a été expédiée et facturé à moins qu'il n'ait avisé par écrit au bureau de Logica de tout produit manquant, irrégularité ou autre motif d'insatisfaction relativement aux quantités expédiées, aux conditions de vente dans les 10 jours suivant la livraison.

ARTICLES DE SECOND CHOIX OU DE REBUT

Tout produit acheté à titre d'article de second choix ou de rebut ne comporte aucune garantie de fabrication ni de matériel et est vendu tel quel. Pour ce qui est de ces articles, aucune des marques déposées de Logica ne peut être utilisée dans aucune publicité ou offre promotionnelle sur ces articles.

RETOUR DE MARCHANDISES : MARCHÉ À SUIVRE ET CONDITIONS

- 1- Communiquer avec le centre de service à la clientèle – sans frais: 877-756-4422
- 2- Le représentant évaluera avec le client la situation et vous donnera un numéro d'autorisation de retour.
- 3- Tous les articles dont le retour a été autorisé doivent être expédiés port payé à l'entrepôt de Logica.
- 4- Écrire le numéro d'autorisation de retour à l'extérieur de toutes les boîtes ou paquets à l'entrepôt de Logica.
- 5- Les articles doivent être retournés dans leur emballage original, sans étiquette de prix et condition de revente.
- 6- Les marchandises non vendables ne peuvent pas être retournées à Logica à moins que la marchandise ne soit défectueuse.
- 7- Les articles de fin de série ne peuvent pas être retournés.
- 8- La marchandise retournée sera sujette à une charge de 25% si les étiquettes ou autres éléments ne sont pas attachés aux produits.
- 9- La marchandise retournée en nombre supérieur à celui alloué par le service aux consommateurs sera la responsabilité du client et sera retournée au client C.O.D.

GARANTIE DU CONSOMMATEUR ET POLITIQUE DE REMPLACEMENT AU DÉTAILLANT

Les produits Logica sont garantis uniquement aux clients commerciaux directs contre tous défauts de fabrication ou de matières premières dans les conditions normales d'utilisation et d'entretien. Logica se réserve le droit d'inspecter les produits défectueux pour déceler toute trace d'abus ou de mauvais usage et de déterminer de sa propre autorité si des réparations ou un remplacement s'imposent. Cette garantie limite la responsabilité légale de Logica à la réparation ou au remplacement. En aucun cas, Logica ne sera tenu responsable de dommages indirects ou secondaires particuliers, quels qu'ils soient. Le représentant n'a fait aucune autre représentation ou garantie, expresse ou tacite, concernant quoi que ce soit, et il n'y a aucune garantie implicite de qualité loyale et marchande ou d'ajustement dans un but particulier.

PRIX DU DÉTAIL

Les prix de détail indiqués dans ce catalogue sont des prix suggérés.

DÉTOURNEMENT DE LA MARCHANDISE

Pour hausser une sélection informée et promouvoir l'image des produits, Logica vend à des magasins sélectionnés à la condition expresse que ces magasins ne revendent pas à d'autres personnes ou personnes morales qui ne sont pas l'utilisateur ou le consommateur final. La revente, le transfert ou toute autre forme de détournement de produit Logica à toute personne autre que le consommateur final est interdite. De telles activités peuvent entraîner la résiliation du contrat du contrevenant et constituer une rupture de contrat de vente pour laquelle Logica pourrait prendre des mesures légales appropriées, notamment des dommages-intérêts ou une injonction. Dans ces circonstances, Logica se réserve aussi le droit d'annuler les commandes préalablement acceptées et d'exiger le retour, aux frais du revendeur, de toutes marchandises détournées.

VENTE DE PRODUITS

Le détaillant n'a l'autorisation de vendre les produits de Logica que depuis son (ses) magasin (s) permanent de vente au détail. La vente de produits Logica par l'entremise de la poste, d'un catalogue, par location de vente au détail en transit temporaire, de moyens électroniques (y compris par l'internet et/ou en ligne) ou de tout moyen autre qu'un magasin au détail doit être autorisée d'avance par écrit par Logica Sport.

PUBLICITÉ

Tout usage de marque commercial et des images de Logica doivent être approuvés par Logica.



DIADORA



DIADORA

**12060 Albert-Hudon,
Montreal-Nord, Quebec
H1G 3K7**

**Toll Free:
1.877.756.4422
Fax: 514.387.1534
diadora@logica.ca
www.diadora.com**

Distributed by

